

Document No.: Registry Accelerator Help Document

# Registry Accelerator

WindowsSupporter Corp.

<http://www.windowssupporter.com>

### Pages Order

<b>Getting Started</b> .....	Pages 3-5
<b>Using Registry Accelerator</b> .....	Pages 6-21
<b>Windows Registry</b> .....	Pages 22-30
<b>Company Information</b> .....	Pages 31
<b>How to Buy</b> .....	Pages 32-33
<b>Terms</b> .....	Pages 34-36

### Introduction

Simply adding or removing software and hardware and changing your preferences and general settings (e.g., creating a shortcut to a document or renaming a folder) your Windows registry will grow in size and complexity. Even this regular use will cause your Windows registry to become fragmented and full of errors.

**Registry Accelerator** is the safest and most trusted registry repair software solution to clean, repair, and optimize your system, free it from registry errors and fragmented entries. Through Advanced Error Detection Technology, Registry Accelerator automatically identifies missing, corrupt, or invalid items in your Windows registry and dramatically enhance performance and general stability.

With Registry Accelerator, you don't need to keep track of all the sources of common problems resulting from missing, broken or bad application or Windows shortcuts and links, obsolete Start Menu items, missing or corrupt application IDs, unused drivers...and many more!

One mouse click and Registry Accelerator does the rest. And, using Registry Accelerator regularly keeps your PC free from errors and from obsolete, unused or unwanted files.



### Features Overview

The latest statistics show that about 94% of computers have corrupt and possibly harmful files. On average, almost each PC will have about 150+ errors on them due to registry fragmentation, and corrupt, unused, missing, orphaned or obsolete entries.

Registry Accelerator has an enhanced proprietary scanning engine that scans deeper than other registry repair software solutions to check for:

Registry integrity and shell folder entries including My Documents, profiles and favorites.

Software locations including missing, orphaned, broken or bad application/Windows paths, and links.

Unwanted browser objects.

Corrupt Active X/COM Objects.

Unused, obsolete Start Menu items.

Redundant Start-up applications and uninstalled application schedulers.

Orphaned shortcuts, temporary (.tmp) files and Scandisk or Checkdisk fragment (.chk) files.

Missing or corrupt application IDs.

Obsolete shared DLLs and folders.

Unused help file references.

Residual and unused files.

Uninstalled software remnants.

Unused and unwanted drivers.

File extensions and associations.

Unnecessary fonts and recent files list.

### Advanced Error Detection Technology

Through its Advanced Error Detection Technology, Registry Accelerator automatically identifies all problem entries in your Windows registry to dramatically enhance performance and maximize system stability.

With Registry Accelerator, you don't need to keep track of all the sources of common problems. One mouse-click and Registry Accelerator does the rest: it fixes all your registry problems including all errors and instances of fragmentation. Registry Accelerator tunes up and streamlines your computer registry to enhance your computer experience and eliminating related system seizures and crashes.

## **Improved Defrag Feature for System Performance and Stability**

Defragging your registry is also critical for the smooth and stable running of your computer. Fragmentation is a serious problem and occurs as application processes modify the registry continually and incrementally. The sizes of your registry files will eventually exceed the Registry Size Limits imposed by Windows causing any subsequent modifications by the applications to fail.

Registry Accelerator allows you to regularly defrag your system to avoid seizures and crashes due to registry fragmentation.

## **Automatic Scans at Start-up to Keep Registry Optimized**

Optimize tune-ups by setting Registry Accelerator to scan your system at every start-up thereby enhancing your computer experience and eliminating related system seizures and crashes.

## **Automatic Backups and Restore Functionality**

With its registry backup functionality, Registry Accelerator gives you complete peace of mind - any changes and repairs that may have been effected may be quickly undone at a click of a button. In addition, the software allows you to select which backup registry configuration to restore. You may also configure Registry Accelerator to perform these backups automatically before each repair.

# Registry Accelerator

The user interface (Overview)

## The user interface (Overview)



**Overview:** When Registry Accelerator starts, the System Overview screen is the default screen.

**Navigation Panel:** Including tabs of Overview, Registry Scan, Settings and Restore. To navigate from one screen to the other, you need to click on those tabs.

**Main Area:** contains the System Overview or a report showing summary details of:

- Last Scan Date
- Last Scan Results
- Latest Registry Defrag
- Latest Registry Backup

**Quick Shortcuts panel :** on the right shows shortcuts to three features of Registry Accelerator.

**Start Scan:** Click on the Start Scan button to start scanning your Windows Registry. This is equivalent to hitting the Registry Scan Tab and accessing the Registry Scan Screen.

**Configure Settings:** Click on the Configure Settings button to access the Settings screen. This is equivalent to hitting the Settings Tab and accessing the Settings screen.

**Defrag Registry:** Click on the Defrag Registry button to start defragging your Windows Registry.

**Summary Bar:** the bar showing the cumulative number of errors found to date and errors fixed to date.


**Register button:** Guide you to enter the Serial Number.

### Scanning Your Registry

The following instructions should get you scan registry in no time!

1. Start the program. the System Overview screen is the default screen.



2. Click on  in the System Overview Screen to start scanning your Windows Registry, and this will immediately start the scanning engine of Registry Accelerator.

Alternatively, hit the Registry Scan Tab and accessing the Registry Scan Screen, then click on





on the Navigation Panel.

3. The Registry Scan Screen allows you to select which items within the Windows Registry to scan. To configure settings, you should tick the check boxes. By default, Registry Accelerator performs complete scans - note the checkbox next to Complete Registry Scan is ticked.

Registry Accelerator will start scanning and for a short while (depending on how big your registry is), you will see the following Progress Screen:



By clicking the Stop Scan Button, you will be able to stop the scan.

The Progress Screen will show you how many errors Registry Accelerator has found in each area of the Windows Registry. Errors are marked with  while areas that are clear of errors are marked .

4. Once you run your scan, the Scan Results window pops up automatically to reveal the incongruence found by Registry Accelerator. Immediately, Registry Accelerator summarizes prompts you of the total number of errors found as a pop-up window and within the Attention Bar.

5. Click the "OK" Button in the pop-up to reveal the list of errors and incongruence found in your Registry.



# Registry Accelerator

Overview

Registry Scan

Settings

Restore

Registry Scan

Scan Results

Registry Defrag

Scan Results (0 Problems/Errors Found)



Path: HKEY\_LOCAL\_MACHINE\SOFTWARE\Microsoft\Windows NT\  
Target: 22222

[Check All](#)  
[Uncheck All](#)

 Create Backup

 Repair Registry

### Complete Registry Scan

In the Registry Scan Screen, you will notice a series of sections to scan:



To configure settings, you should tick the check boxes. By default, Registry Accelerator performs complete scans - note the checkbox next to Complete Registry Scan is ticked.

As such, you are to keep in mind that during the Complete Registry Scan, Registry Accelerator will scan all sections and with Advanced Error Technology is filters errors extensively and securely to ensure complete registry and optimization.

### Partial Scans

Registry Accelerator can perform scans on particular sections of your Registry rather than all of it.



To select the desired section of your registry you must configure the relevant settings. By default, Registry Accelerator performs complete scans - note the checkbox next to Complete Registry Scan is ticked. If you click on the checkbox, you will notice that all the Registry sections become unchecked.

The following explains with each section of the registry relates to:

**ActiveX and COM:** Registry Accelerator will search for currently installed COM and ActiveX objects. Registry Accelerator performs complete heuristic analysis of ActiveX and COM sections as they are interlinked and interdependent.

**Software:** Registry Accelerator will search for the software settings of the currently logged user for invalid references.

**Application Paths:** Many applications store the associated program executable (e.g., firefox.exe launches Mozilla Firefox) within their installation directory. Sometimes these program executables are moved to some other location but their associations are not updated - such invalid or missing references keep cluttering the registry. When ever you launch a program, Windows first search Application Path's Section and missing entries will only increase such search time - delaying program launch.

**Fonts:** Windows store each reference to a font in the registry. Some of the installed font faces may not

appeal to all users and consequently are removed - thus failing to register changes within the Windows Registry. If the font section is not cleaned regularly, Windows can start showing different font faces instead of those expected/desired.

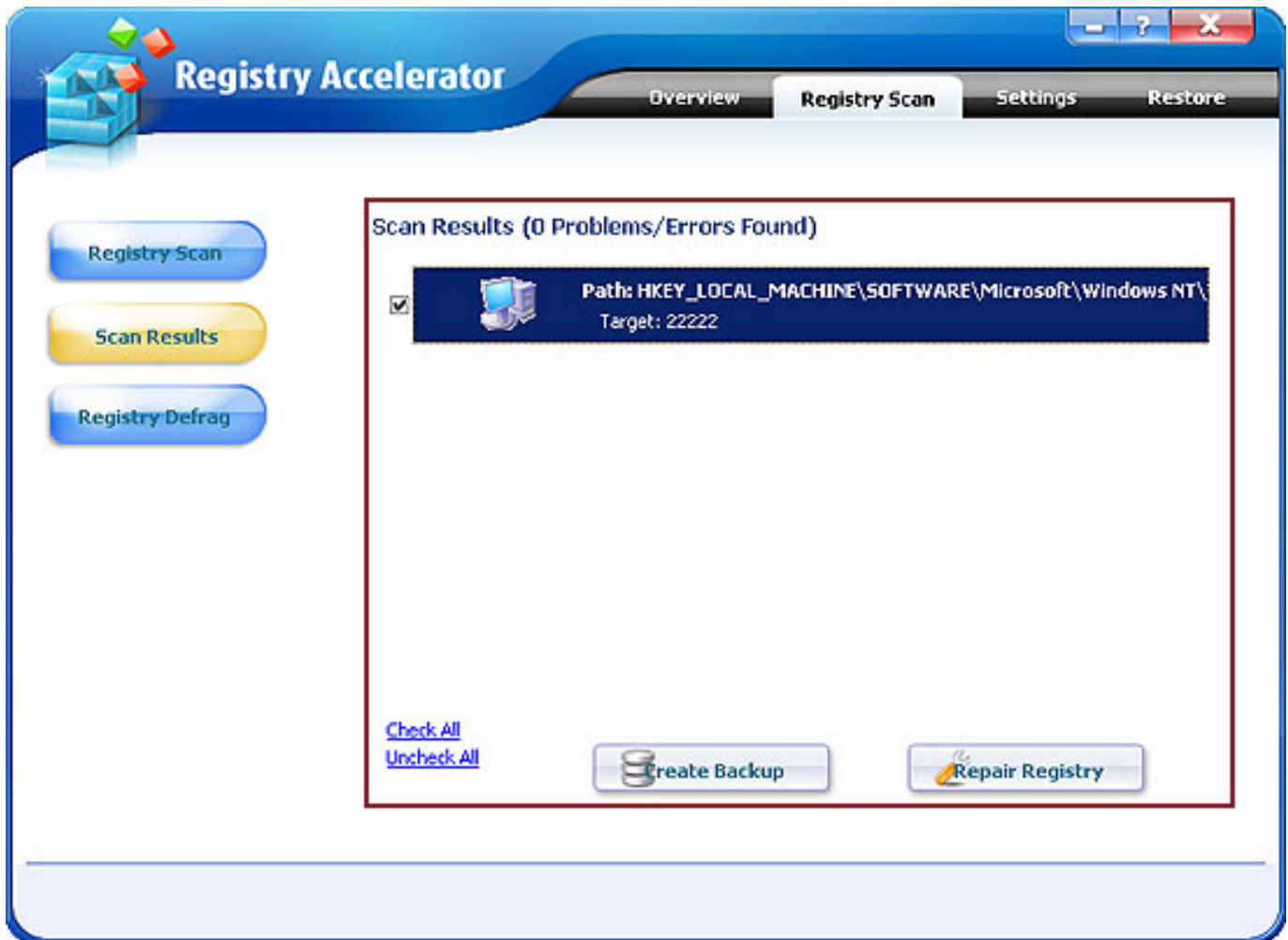
**Startup:** Some applications may be configured to run as soon as you start up Windows while others may automatically configure some processes to run automatically at start up without the need for user configuration (e.g., schedulers, Anti-spyware guards and Windows Update). As applications register themselves with the Windows Registry, they also indicate references to the processes and locations that the operating system needs to run upon start up. Registry Accelerator analyses the Windows Registry to repair these references.

**Sound:** Windows provides you facility to associate an application event with a sound event, for example, the "ding dong" sound you hear when an application presents a message Box. If a sound file used for any event is missing, applications and Windows are unable to handle the event resulting in such unexpected occurrences as like playing irregular sounds. Registry Accelerator repairs references to sounds and other events that are missing or inexistent.

**Help Files:** All applications following Microsoft standards must register their help files to the Windows Registry. Registry Accelerator looks for missing, erroneous or orphaned links.

### Repairing Your Registry

After registry Accelerator finishes scanning your Registry (whether complete or partial scans), the program calls up the Scan Results Window which summarizes all the problems found in your Windows Registry.



2. The area highlighted shows you a list of the errors found - Scroll this list and select individual entries to repair and which to leave unchanged.

By default, Registry Accelerator will repair all the identified errors. To change your selection for individual registry errors, tick the check box.

By clicking the "Uncheck All" Button, none of errors will be repaired. To reverse this selection click on the "Check All" Button.

3. Registry Accelerator also allows you to create a backup of your registry entries before repairing errors

found. To do this click on



To repair the selected errors click on



4. Once Registry Accelerator starts repairing your registry, the following Progress Screen appears showing

you the progress of the repair feature. This may take a few minutes and depends entirely on how many and the type of errors have been found in your Registry.

5. Once repairs are complete, the following screenshot appears:

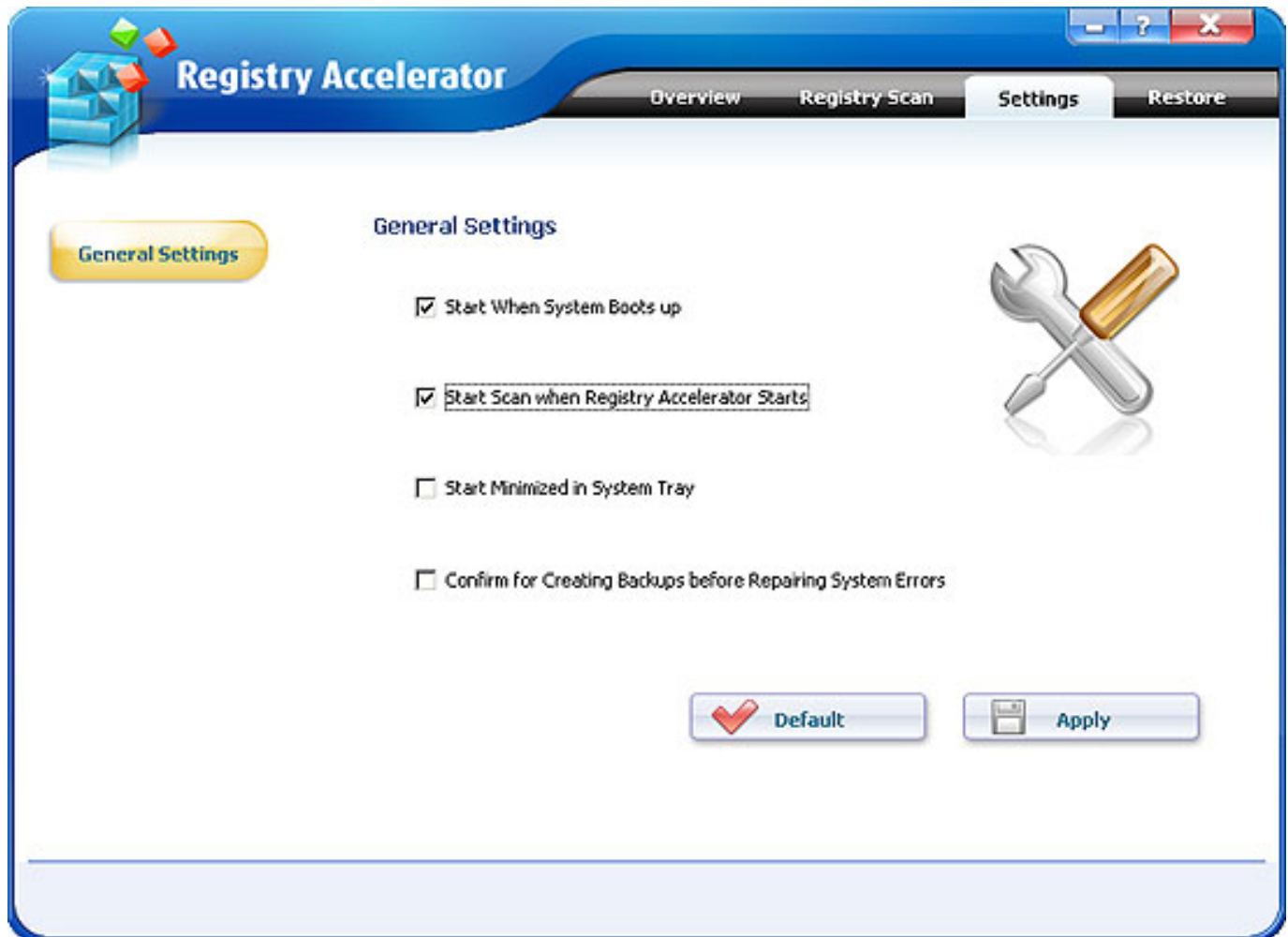


When you click "Continue", Registry Accelerator takes you back to the System Overview Screen, and you will notice that your System Overview report has been updated with the date of the last scan and the number of errors found. At the bottom of the user interface, you will also notice that the Summary Bar now shows you the number of errors found and the number of registry errors repaired.

### Configuring Registry Accelerator

Registry Accelerator may be configured to reflect your personal preferences.

To configure Registry Accelerator, click on the Settings Tab in the Navigation Panel.

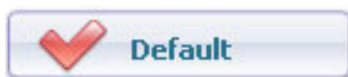


To change the settings simply check box next to the particular preference.

Once the combination of preferences are selected, click on



By clicking on



returns all your settings to the default configuration.

### Settings:

**Start when system boots up:** This launches Registry Accelerator as a service upon boot-up.

**Start scan when Registry Accelerator Starts:** This allows you to start scanning your registry immediately and automatically as soon as Registry Accelerator is launched.

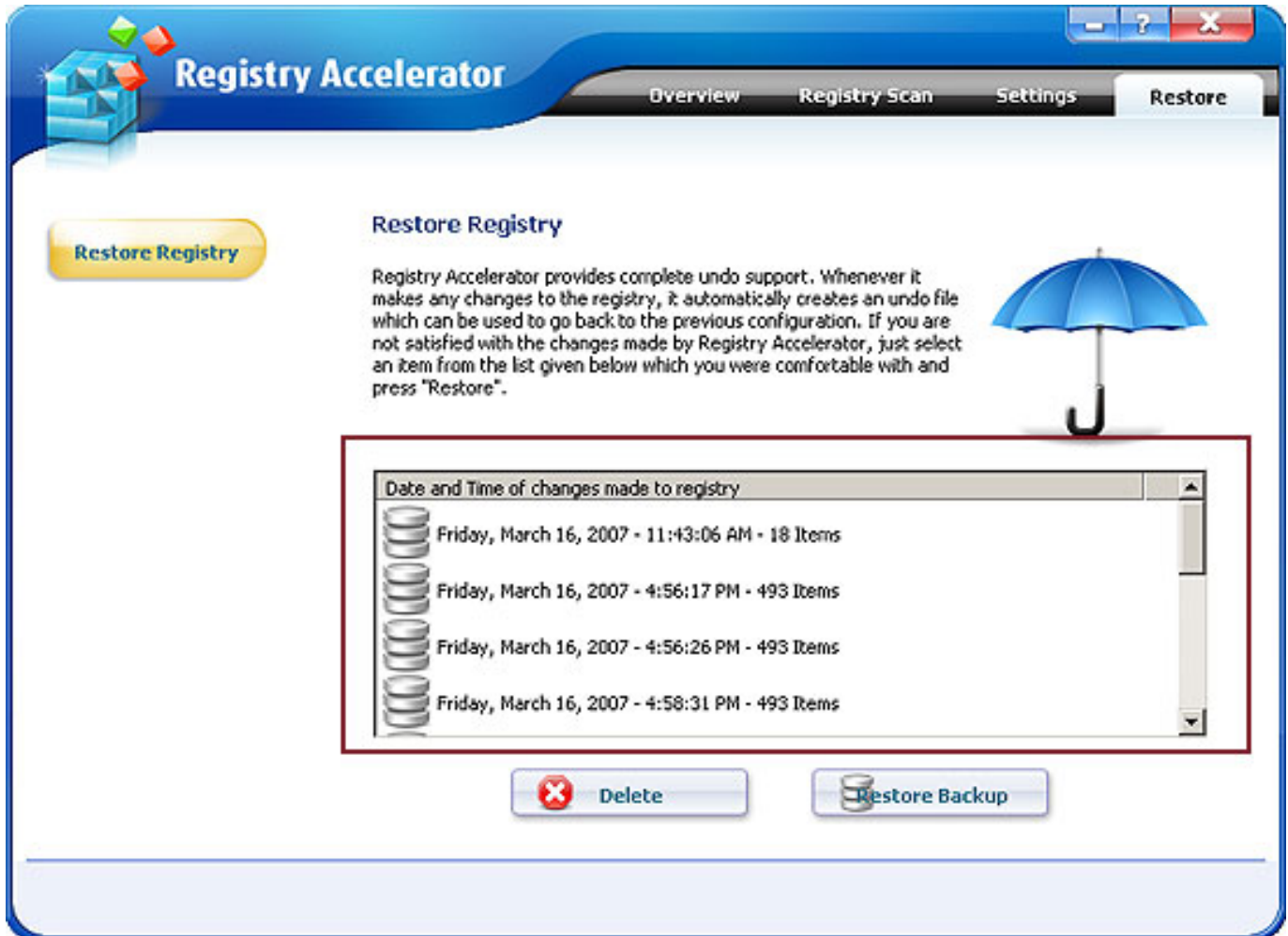
**Start minimized in System Tray:** You may want to launch Registry Accelerator to run in the background. Tick the checkbox next to the "Start Minimized on Tray" entry.

Confirm for creating backups before Repairing System Errors: We recommend that you enable this setting. This will ensure that your registry gets backed up automatically every time you repair your registry.

### Registry Restores

At any point you may restore a Registry configuration to an earlier saved and backed up version.

Click on the Restore Tab on the Navigation Panel to reveal a list of backup files.



Two buttons may be found on the bottom right hand side of the screen. These either Delete the Registry Backup File or Restore a highlighted Registry Backup file.

To restore a Registry Backup file, click on the desired file within the backup file list and then click on the Restore Button.


Registry Accelerator requests a confirmation to restore the backed up registry file.

There is a limit (maximum 5 files) to how many backed up registry files you can maintain. Be sure to clean out the older versions by highlighting the file you need to delete and clicking on the Delete Button.

### Registry Defrags

Registry Accelerator is designed to reorganize the data within your registry so that your computer runs more efficiently. Registry fragmentation is a similar phenomenon as fragmented hard drives. Your computer will slot new pieces of data in empty areas of your registry. If the file is too big for the slot, your computer will break it up and put a piece in one slot and another elsewhere. This creates gaps, wasted space and increase the probability of corruption of your registry. By defragging your registry, Registry Accelerator will create a more linear structure maximizing application response times and registry access times, saving memory (smaller registries consume less memory), and enhanced boot-up times. This results in improved system performance and decreases the probability of registry corruption.



Click on  to start defragging your Windows Registry in the Systems Overview Screen.

Alternatively click on the Registry Scan Tab on the Navigation Panel. When in the Registry Scan Window, click on the Defrag Button on the side navigation panel to access the Defrag Window.




Once Registry Accelerator starts defragging your registry, a status monitor will appear.

After completing, Registry Accelerator will ask you to reboot your system to ensure that the affected changes take place.

To ensure the best results, please close all applications before you run your defrag.

During the defrag, your system may appear sluggish and to slow down depending on computer memory and the size of your registry. This normal - do not attempt to stop the defrag.

### Question Icon

The Question Icon  shows other information about Registry Accelerator. Clicking this icon, you will see the following window:



**Help Content:** Guide to the help file, or clicking the Key "F1" to see the help file directly.

**Quick Start:** Guide to the "The user interface (Overview)" page in the help file.

**Languages:** Choosing English, French or German Interface.

**Register:** Open to the registration window.

**Enter Serial Number:** Enter the registration key to switch the trial version into full version.

**Online Resources:** Link to Windows Supporter Website.

**Contact Technical Support:** Contact our Support Team.

**About:** Show the information of this software.

### What is the Windows Registry

The Windows registry is a central database of information needed to configure your computer system for general settings and preferences, software applications, and hardware drivers and devices. Keeping your registry in a good state of repair and conducting regular maintenance is imperative because the registry contains important data that is used all the time during system operation.

As you continue changing preferences, installing and uninstalling software and hardware, the registry grows and becomes more complex. In addition, the chances of errors and missing, obsolete or corrupt entries increases exponentially.

The registry is a centralized hierarchical database used by various versions of Windows (MS Windows 9x, CE, NT, 2000 and XP) to store computer configuration information. This information is necessary for Windows to run your computer system including all your installed applications and hardware devices. Not only does the registry save the path and location of these items, it also retains other details which help the processor to locate applications and hardware devices quickly and efficiently thereby reduce decreasing processing time. Records are kept of each and every item present.

Registry entries include details on:

- User profiles, settings, options and preferences

- Applications installed on the computer

- Property settings for folders and applications

- Hardware devices installed on the system

- Ports being used

- System Policies

- File Associations

### When and Why do Registry Problems occur

If your system is new, you usually will not notice the need to effect any changes to your registry. However, over time, your registry will grow as you add and remove software and hardware on your computer. These additions and deletions will cause your Windows registry to become fragmented, corrupted or full of errors.

Common errors include:

- Missing, orphaned, broken or bad application/Windows paths, shortcuts and links

- Unwanted browser objects

- Unused, obsolete Start Menu items

- Missing or corrupt application IDs

- Corrupt Active X/COM Objects

- Residual and unused file and drivers

- Unnecessary recent files list

When you remove software from your system, for example, it is highly probable that residuals are still littering your hard drive and your registry. Frequent error messages, slow start-ups, sluggishness, declining performance, system stalls, severe degradation in operating speed, unstable and frequent application errors and crashes, and, at times, even an inability to start Windows.

More often than not, these problems happen because:

- You install or uninstall applications including trial downloads

- Some programs are never really completely uninstalled leaving hard-to-find traces in your Windows registry

- You have embedded spyware, adware or other components (such as DLLs or programs that revive themselves on every start up

- You have unused but undeleted drivers within your system

It is critical to have a healthy and clean Registry for optimum system performance and system stability. Registry entries should not be left to stagnate in your system where they may eventually cause problems

Keeping track of all this information is grueling and bewildering

### **How is the Windows Registry Structured**

The registry database is stored in a hierarchical structure. It may be best to conceive the registry as a tree divided into a number of areas or branches. Depending on your Windows version, the Registry comprises four to six sub-trees of keys called hives (also referred to as discrete files).

Each hive contains a Registry sub-tree, which has a key that serves as the root (i.e., starting point) of the tree. A registry hive is a group of keys, sub keys, and values in the registry that has a set of supporting files containing backups of its data. Sub keys and their values reside beneath the root. The values contain the actual information stored in the Registry.

The majority of the information in the Registry is placed there automatically by Windows when the operating system is installed.

### How do I know whether I have Registry problems

Changes are not necessary when you have a new system even though within a very short period, your registry will quickly grow as you install and remove software and hardware. Usually, within six months, your Windows Registry will become highly fragmented with regular use; and, if you add and remove software and hardware frequently or often effect changes within your system, your registry may corrupt and be full of errors.

Changes to registry entries modify the size of the files where the information is stored.

Registry fragmentation occurs because certain processes continually use the registry to incrementally modify the same values in the corresponding registry hives. Microsoft warns, for example, that this fragmentation, in certain cases, may be excessive. File sizes may eventually exceed the Registry Size Limits imposed by Windows and this will cause subsequent modifications to the registry to fail with resultant errors, slowdowns and crashes.

Some registry errors include:

- Missing, orphaned, broken or bad application/Windows paths, shortcuts and links
- Unused, obsolete Start Menu items
- Missing or corrupt application IDs
- Residual and unused files
- Unused and unwanted drivers
- ...the list is endless

None of these problems are visible unless you access the registry directly. And even there the problems are rarely obvious. Registry fragmentation and errors will effect the performance of your computer and its stability and smooth operation.

The more frequent symptoms of registry problems include:

- Frequent error messages
- Slow start-ups
- Sluggishness
- Declining performance
- System stalls
- Severe degradation in operating speed
- Unstable and frequent application errors and crashes
- At times, even an inability to start Windows

### What are the most common Registry problems

Several problems may occur within your registry and are generally related to registry fragmentation, and corrupt, unused, missing, orphaned or obsolete entries.

Fragmentation may be a serious problem and usually occurs because certain processes continually and incrementally modify the same values within the registry. This fragmentation, in certain cases, be excessive and eventually registry file sizes may exceed the Registry Size Limits imposed by Windows. This will cause any subsequent modifications to the registry to fail.

Some registry errors include:

- Registry integrity and shell folder entries including My Documents, profiles and favorites

- Software locations including missing, orphaned, broken or bad application/Windows paths, and links

- Unwanted browser objects

- Corrupt Active X/COM Objects

- Unused, obsolete Start Menu items

- Redundant Startup applications and uninstalled application schedulers

- Orphaned shortcuts, temporary (.tmp) files and Scandisk or Checkdisk fragment (.chk) files

- Missing or corrupt application IDs

- Obsolete shared DLLs and folders

- Unused help file references

- Residual and unused files

- Uninstalled software remnants

- Unused and unwanted drivers

- File extensions and associations

- Unnecessary fonts and recent files list

### Is my PC free of Registry problems

Statistics show that about 94% of computers have corrupt and possibly harmful files. On average, almost each PC will have about 150+ errors on them due to corrupt or missing registry entries.

Although a closer analysis is needed (download Registry Accelerator for a free scan), it is highly probable that even though your computer system is new or you are not encountering any visible serious problems, your computer already has some problems in the registry.

The more frequent symptoms of registry problems include:

- Frequent error messages
- Slow start-ups
- Sluggishness
- Declining performance
- System stalls
- Severe degradation in operating speed
- Unstable and frequent application errors and crashes
- At times, even an inability to start Windows

If you are experiencing system crashes or if some of your installed applications are freezing or seizing for no obvious reason, your best bet is to de-fragment, clean and repair your Registry.

Keeping your system free of registry problems and fragmented entries is difficult even for the most experienced of users. The task is daunting and rather confusing simply because there are so many registry entries and detailed knowledge is required to effect any changes and not cause damage.

This is why Registry Accelerator has become one of the leading registry repair software utilities on the market. Literally, hundreds of users entrust the defragging, cleaning and repairing to the Registry Accelerator, which, when used regularly, ensures that you prevent registry glitches and errors thereby dramatically improving system performance and stability.

Registry Accelerator is the safest and most trusted solution to clean and optimize your system, free it from errors and residual files and drivers. Through Advanced Error Detection Technology, Registry Accelerator automatically identifies missing, corrupt, or invalid entries in your Windows registry and dramatically enhance performance and stability.

With Registry Accelerator, you don't need to keep track of all the sources of common problems. One mouse-click and Registry Accelerator does the rest. And, using Registry Accelerator regularly keeps your PC free from errors and from unused or unwanted files.

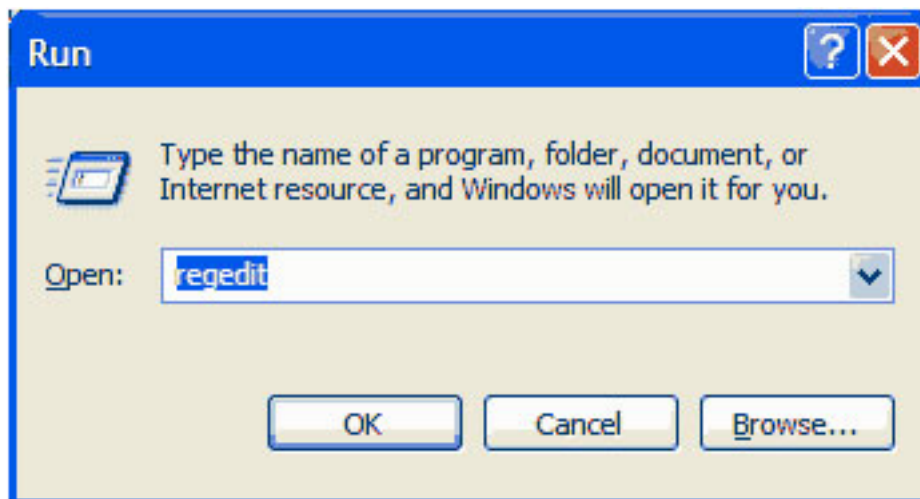
### Do I need to repair Registry problems

Without any shadow of doubt! If you don't, error messages will increase, your system start-up time will increase, your computer will be more sluggish than ever, system performance will take a nose-dive, you will start experiencing more frequent application seizures and crashes and eventually Windows may not start.

Prevention is always better than cure. Repairing registry issues and preventing crashes should be a your top priority - however, this means that you are reacting to problems as they arise. Instead, you should use registry repair software (such as Registry Accelerator) regularly (at least once a month) to clean your system and keep it operating at peak performance and stability. Defragging your registry is also crucial. Fragmentation may be a serious problem and usually occurs because certain processes continually and incrementally modify the same values within the registry. This fragmentation, in certain cases, be excessive and eventually registry file sizes may exceed the Registry Size Limits imposed by Windows. This will cause any subsequent modifications to the registry to fail.

### How do I repair Registry problems

Registry problems may be repaired either manually by accessing the regedit utility built in Windows or automatically through registry repair software. The regedit utility is accessed through the Start Menu->Run and then typing regedit before clicking OK.



Keeping your system free of registry problems and fragmented entries is difficult even for the most experienced of users. The task is daunting and rather confusing simply because there are so many registry entries and detailed knowledge is required to effect any changes and not cause damage. Incorrectly editing the registry may severely damage your system. Before making changes to the registry, you should back up any valued data on your computer.

The top registry repair software solutions like Registry Accelerator help you do all this work automatically at the click of a button.

Simply click on the Start Scan button to scan your registry and identify problems. Once these

problems are listed you can repair your registry with the click of the Repair Registry button. To defrag your registry, just click on the relevant button.

### **What is Registry Repair Software**

Registry repair software fixes all your registry problems including all errors and instances of fragmentation

It tunes up and streamlines your computer registry to enhance your computer experience and eliminating related system seizures and crashes. Registry repair software keeps track of all registry entries repairing issues and ensuring your computer to work at peak performance. Using the software regularly allows you to minimize registry related problems.

Fragmentation is a serious problem and occurs when application processes modify the registry continually and incrementally . Eventually registry file sizes may exceed the Registry Size Limits imposed by Windows. This causes subsequent modifications to the registry to fail. Most registry repair software allow you to defrag your registry ensuring that such issues do not occur. This is true prevention.

### About Windows Supporter

#### Be the top Guard of Windows!

Being a shareware developer of Windows Operating System solutions, Windows Supporter take the lead in this domain. We have professional experience in execute our faith - Think as A Customer. This gives us the idea to create reliable and simple-in-use software products for you.

Windows Supporter R&D Center creates simple solutions to complicated problems. And sleek, clear interfaces in our accomplishment make everything you need from us being enjoyable.

#### Contact Us

##### For Customers

Email:

English: [support@windowssupporter.com](mailto:support@windowssupporter.com)

French: [support\\_fr@windowssupporter.com](mailto:support_fr@windowssupporter.com)

German: [support\\_de@windowssupporter.com](mailto:support_de@windowssupporter.com)

Tel:

+1 952 646-5022 (for calls from outside the U.S.)

+1,800,406 4966 (for calls from inside the U.S.)

##### Registry Accelerator

Product ID: 300152412



We always do our best to answer your question!

##### For Partners

North America:

[sales@windowssupporter.com](mailto:sales@windowssupporter.com)

We benefit together with our partners in a win-win model - the Windows Supporter Business Model, and we love to talk about our creations with you.



<http://www.windowssupporter.com>

### How to buy Registry Accelerator

As soon as you make your order, our resellers will verify it. Your order will most likely be processed within less than 1 hour, but in some VERY rare cases it may take resellers more than 24 hours to process your payment.

The registration key will be automatically generated at our server and e-mailed to you immediately after we receive payment confirmation from our e-commerce reseller.

Please do not worry if you haven't received the registration information right away. Usually it happens due to too secure settings of spam filters used by our clients. And it may happen so that our message is rejected as a spam message by the mail service you use.

In case if you haven't got the registration message in several hours, feel free to contact our [Support Team](#) via email.

If you have any questions concerning our software, mail to: [support@windowssupporter.com](mailto:support@windowssupporter.com).

**We always do our best to help you!**



**Buy Now**

### Why Registry Accelerator?

#### Save Time

- It is outstanding in **high-speed**;
- The **easy-in-use interface** reduces your time in learning;
- According to surveys, it saves **20%** time in scanning;

#### Save Money

- It is **one-way ticket** you have to buy in fixing all your registry problems;
- Guarantee **30-days-money-back** if you are unsatisfied with it!

#### All in one tool

Do more with Scanning, repairing and backup registry are all supported by this powerful tool.

#### Easy-in-use

It is easy to use and fast in speed, With step-by-step manual, Whether you are an experienced user or a beginner, the software will make the task of optimizing your system a breeze!

### What will you have after purchase?

#### Full version of Registry Accelerator

There would no limit in its functions, and you could have fun in unlimited system optimizing.

### **Lifetime license**

When you purchase Registry Accelerator, you get free online upgrades on the main version with Lifetime Upgrade Policy.

### **Customer care**

We are pleased to offer our care to meet your needs. We promise our customers, any customer questions will be satisfied within 1 business day!

### **Coupons for Windows Supporter products in Discount Center**

We prepared a series of benefits to our customers.

## **Is my order secure?**

We promise the most secure purchase as we did for years.

[ShareIt](#) and [RegNow](#), all these Windows Supporter partners passed strict certification. We truly believe in 'Only benefit our customer can benefit ourselves'. So your purchase security in Windows Supporter is one of the top affairs we care about! Windows Supporter has been involved in E-commerce for years. And through these years, we built up a secure online shopping system. You can enjoy the high-speed and convenience we specially offered for you.

### Glossary of Terms

#### **ActiveX**

An ActiveX control is essentially a simple OLE object that supports a variety of interfaces. ActiveX Controls have become the primary architecture for developing programmable software components for use in a variety of different containers, ranging from software development tools to end-user productivity tools. ActiveX controls register themselves in the Windows Registry.

#### **Application**

Applications are programs that are designed for end users such as word processors, spreadsheets, Customer Relationship Management and database software.

#### **Backup**

The procedure that allows you to store your data on a separate storage medium so that you can reproduce the data with 100% accuracy if and when data loss takes place.

#### **COM**

Microsoft defines COM or Component Object Model as "a platform-independent, distributed, object-oriented system for creating binary software components that can interact. COM is the foundation technology for Microsoft's OLE (compound documents), ActiveX® (Internet-enabled components), as well as others".

#### **Custom Controls**

A custom control is subsequently a control that is non-standard to Windows or proprietary to the application that is being installed. An example, in a car racing game, a custom control would be the speedometer. It is not a native Windows control but is required by the application (car racing game).

#### **File Associations**

A file association allows you to control certain aspects of how the Shell's treats different file types.

#### **File Extensions**

In such operating systems as Windows, one or several letters (generally three) at the end of a filename. Filename extensions usually follow a period (dot) and indicate the type of information stored in the file. Common file extensions include pdf, .exe, .gif, .jpg, .tif, .mp3, .avi, .doc, .xls, and .zip.

#### **File System**

A system for organizing directories and files, generally in terms of how it is implemented in the disk operating system.

#### **Objects**

An object is a software bundle of variable items of data (state) and related behaviors implemented through methods. A method is function (subroutine) associated with an object. For example, an event is a common object used in window systems to represent the action of a user pressing a mouse button or a key on the keyboard.

#### **Processes**

While the term "program" refers to an executable code (the exe file for MS Word, for example), a process is a program that is being executed. When you start a program in Windows, the executable will be loaded into RAM. Windows will then add the new process to its internal process list and make sure the process receives some CPU time as well as memory and other resources.

## **Registry**

The Windows registry is a central database of information needed to configure your computer system for general settings and preferences, software applications, and hardware drivers and devices. Keeping your registry in a good state of repair and conducting regular maintenance is imperative because the registry contains important data that is used all the time during system operation.

## **Registry Fragmentation**

Registry fragmentation is a phenomenon similar to fragmented hard drives. Your computer will slot new pieces of data in empty areas of your registry. If the file is too big for the slot, your computer will break it up and put a piece in one slot and another elsewhere. This creates gaps, wasted space and increase the probability of corruption of your registry.

## **Registry Repair Software**

Registry repair software fixes all your registry problems including all errors and instances of fragmentation.

## **Restore**

The process of reinstating a set of data to its original state before the data loss or related incident has occurred.

## **Shell**

The Windows user interface gives you access to a wide variety of objects necessary for running applications and managing the operating system. The most numerous and familiar of these objects are the folders and files that reside your hard drive. There are also a number of virtual objects that allow the user to do tasks, such as send files to remote printers or access the Recycle Bin. The Shell organizes these objects into a hierarchical structure and provides users and applications with a consistent and efficient way to access and manage various objects. Users interact with the hierarchy (or namespace) through the Shell's graphical UI or through an application.

## **Shell Namespace**

The Shell namespace organizes the file system and all objects managed by the Shell into a single tree-structured hierarchy. Think of it as a larger and more inclusive version of the file system.

## **Shortcuts**

Special types of files that contain preset links to various single files, folders and devices. Windows has a series of shortcuts placed on the computer desktop to allow access to files and devices at one click of a button.

## **User Interface**

The menu and general instruments available for the user to communicate with the program. In Registry Accelerator the user interface is designed to be highly intuitive and exceptionally simple to use.

## **Virtual Devices**

Virtual devices are also referred to as a virtual peripheral - a virtual device mimics a physical hardware device, essentially, "tricking" your system into believing that a device exists when

actually it does not. For example, fax software can act as a virtual printer. When want to send a document to your fax modem, you would print it "normally" to the fax/modem (virtual printer) device, which then sends information to another fax / modem or fax machine instead of your printer actually printing the file.