

Document No.: Advanced Process Controller Help Document

Advanced Process Controller

WindowsSupporter Corp.

<http://www.windowssupporter.com>

Pages Order

Getting Started	Pages 3-7
Using Advanced Process Controller	Pages 8-28
About WindowsSupporter	Pages 29-30
FAQs	Pages 31-32
How to Buy	Pages 33-34

Introduction

Advanced Process Controller allows you to view all processes currently running on your system and to manage them. You are able to kill selected processes in a snap, which can not be realized by the classic Task Manager. It is an extremely powerful and versatile replacement for the Windows Task Manager. This impressive utility is an absolute power user's delight. Advanced Process Controller provides an attractive tabbed interface that shows active processes, finished processes, windows, modules, and a statistics panel that features real-time monitoring for memory and CPU usage. You can kill selected processes, and easily retrieve information regarding process/module dependencies.

Advanced Process Controller is an easy-to-use program designed to help you to manage all of your jobs and tasks. Easy data entry allows for minimal time spent on logging new and editing existing tasks.

Advanced Process Controller

File Options View Shut Down Help

New Application Update Speed Select Columns Help Content

Process Info

- Show Details
- Properties
- Open Folder
- Google Process

Process List

- Add To BlackList
- Add To WhiteList
- Add All To WhiteList

Tips

This Page displays a list of the currently active processes as well as their detailed information

Process Name	PID	Cpu Usage	Mem Usage
<input type="checkbox"/> System Idle Process	0	72%	16K
<input type="checkbox"/> System	4	9%	324K
<input type="checkbox"/> smss.exe	636	0%	420K
<input type="checkbox"/> csrss.exe	716	1%	13740K
<input type="checkbox"/> winlogon.exe	740	0%	10172K
<input type="checkbox"/> services.exe	784	0%	4912K
<input type="checkbox"/> lsass.exe	796	0%	4072K
<input type="checkbox"/> svchost.exe	964	0%	5828K
<input type="checkbox"/> svchost.exe	1020	0%	5060K
<input type="checkbox"/> svchost.exe	1108	0%	38132K
<input type="checkbox"/> svchost.exe	1192	0%	4332K
<input type="checkbox"/> svchost.exe	1336	0%	5160K
<input checked="" type="checkbox"/> avp.exe	1504	0%	11608K
<input type="checkbox"/> MDM.EXE	1540	0%	3408K
<input type="checkbox"/> SMAgent.exe	1596	0%	2228K
<input type="checkbox"/> alg.exe	2012	0%	4196K
<input checked="" type="checkbox"/> avp.exe	1776	0%	3012K
<input type="checkbox"/> msnmgr.exe	1784	0%	13572K
<input type="checkbox"/> clfmn.exe	980	0%	5520K
<input type="checkbox"/> usnsvc.exe	1992	0%	3096K
<input type="checkbox"/> svchost.exe	3240	0%	4448K
<input type="checkbox"/> TTPlayer.exe	3136	0%	5304K
<input type="checkbox"/> EXCELEXE	204	0%	12996K
<input type="checkbox"/> Snagit32.exe	616	0%	9704K
<input type="checkbox"/> TSCHelp.exe	2420	0%	3336K
<input type="checkbox"/> explorer.exe	3796	0%	16408K
<input type="checkbox"/> RoboSoft.exe	3104	0%	24300K
<input type="checkbox"/> msimn.exe	2140	0%	6772K
<input type="checkbox"/> Photoshop.exe	3264	0%	40212K

Sys Runtime: 3 hrs 20 min 27 s Processes: 34 Cpu Usage: 28% Memory Used: 450M / 959M

Buy Now

Features Overview

What the **Advanced Process Controller** is and what you can do with it:

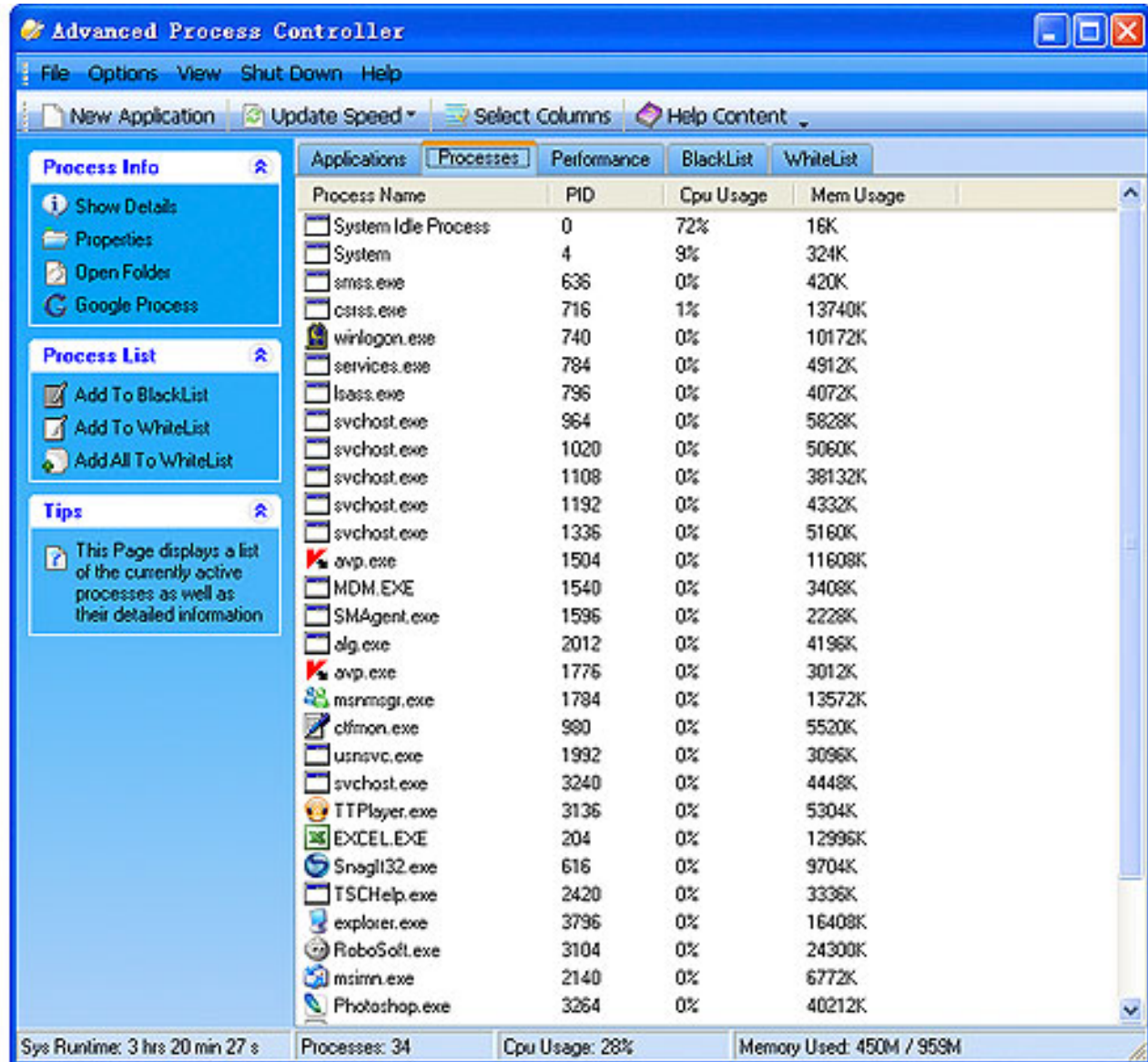
- you can easily see what's happening behind the desktop.
- you can see the modules of each running process, **Advanced Process Controller** lets you close normally or kill any running process.
- see graphs and data on CPU and memory usage.
- complete information about processes and modules.
- click the process show the general information.
- specify process counter column headings.
- blacklist which confirms that items being analyzed are not acceptable.
- whitelist which confirms that the item being analyzed is acceptable.
- free online resource for process information through Google.
- pause process suspends the execution of process until it is reactivated by the resume process command.

So, with one quick look you can see that **Advanced Process Controller** is the tool you're looking for a long time, it shows you the backstage of your computer, and more, it lets you control things.

Advanced Process Controller

The user interface (Overview)

The user interface (Overview)



Overview: When Advanced Process Controller is started, all currently running processes are displayed in the Processes tab page.

Toolbar: Including features of adding new applications, regulating upgrade speed , selecting columns for processes and help content, which allow users to run these relevant commands conveniently .


Task Panel: Allow users to approve or deny some of the commonly used tasks.

Tab Page: Including tabs of Application, Processes, Performance, Blacklist, and Whitelist.

To navigate from one page to the other, you need to click on those tabs.

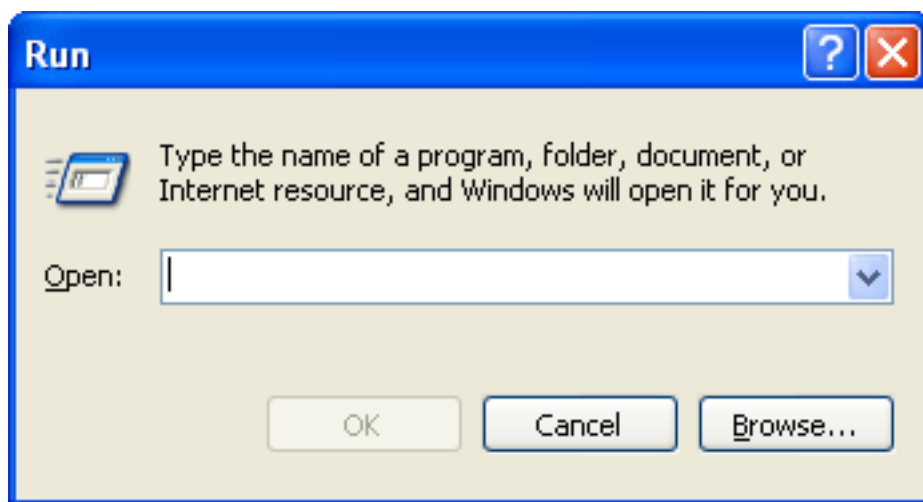


How to Add a new application


You are able to add a new application by clicking 

The following steps describe how to add a new application

- ▶ **Step1:** Click the the button "New Application" to open the Windows Run dialog.
- ▶ **Step2:** Type the name of a program, folder, document or internet resource, and windows will open it for you. in

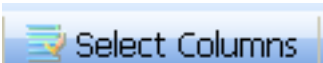


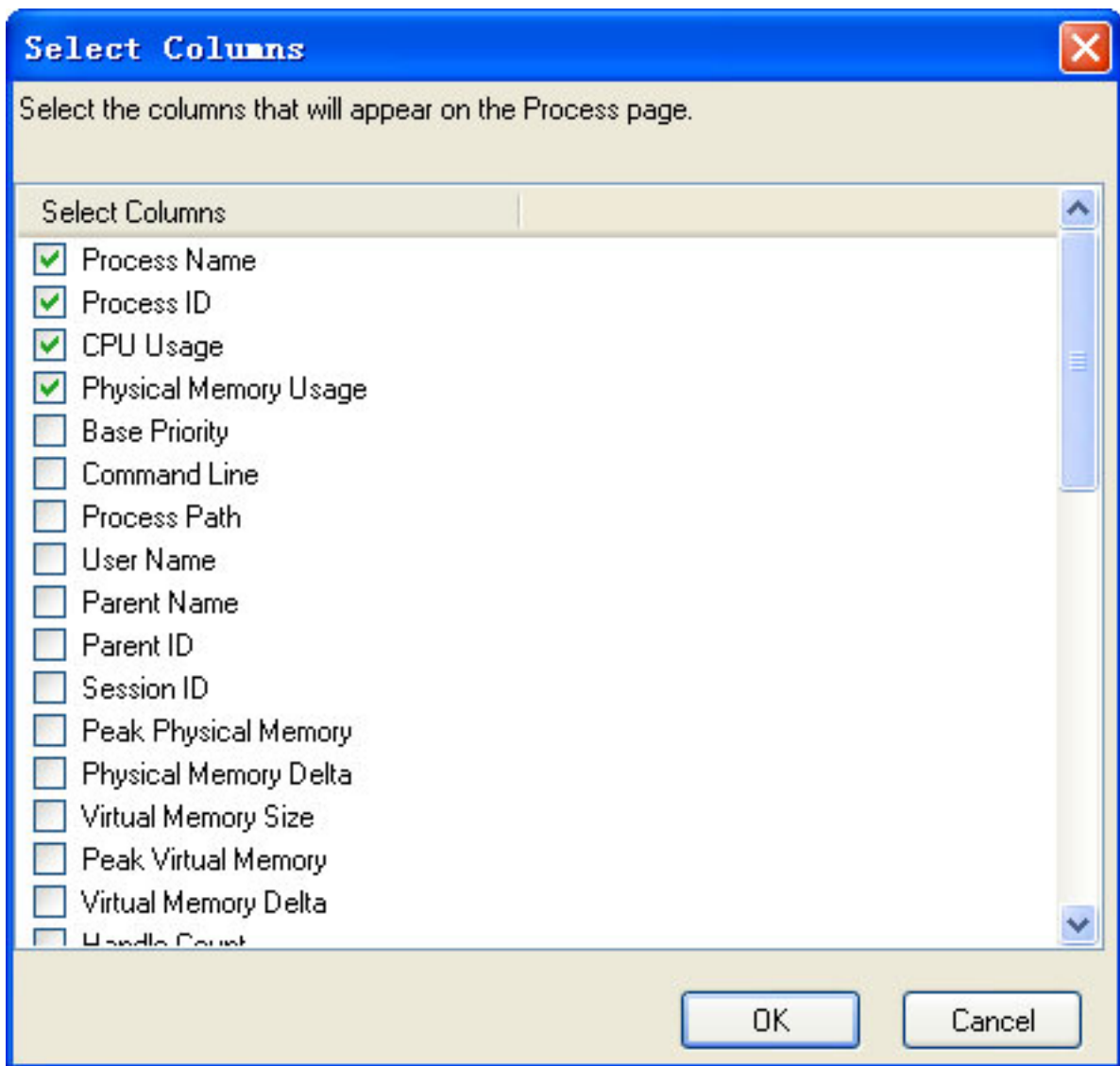
About Update Speed

This function allows you to choose the frequency at which the data is automatically updated, Click  menu, then point to the command you want. To temporarily freeze the data displayed in Advanced Process Controller, Click "Paused" in the same menu. Data is automatically updated every one second by default.

How to select columns

The following steps describe how to select columns:

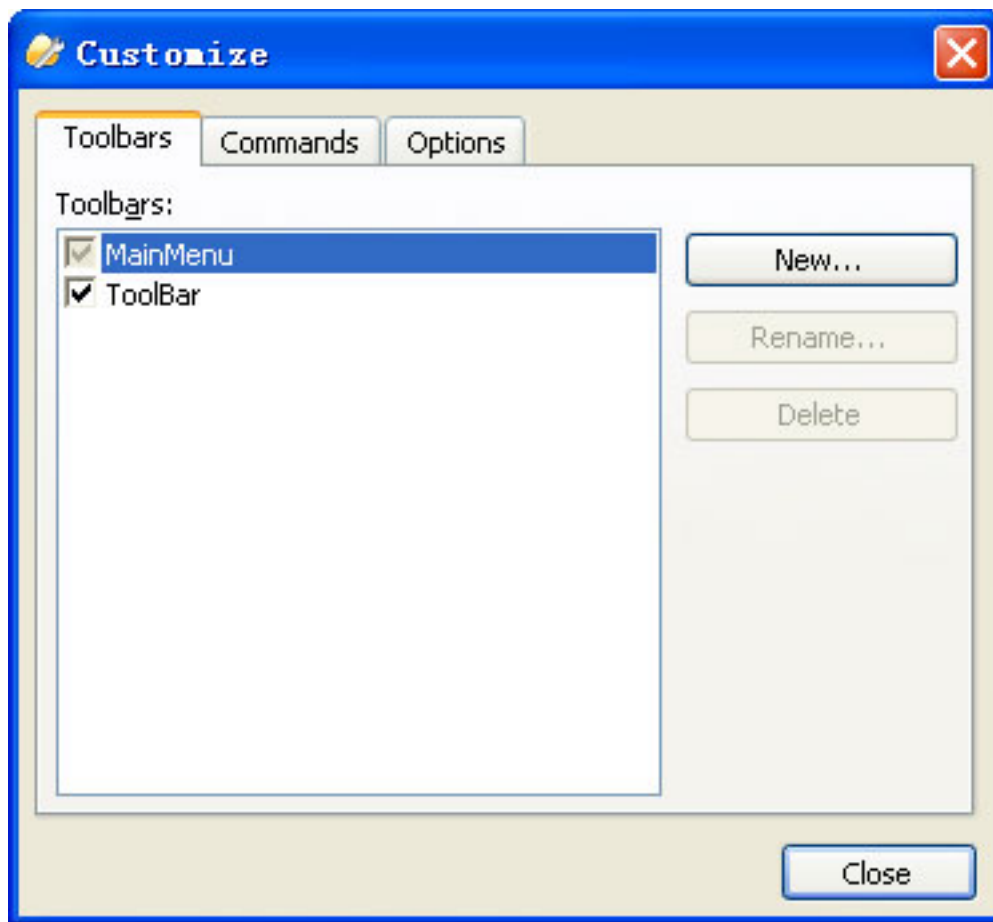
- ▶ **Step1:**Click the button "process" on the tab page.
- ▶ **Step2:**Click the button , and then it appears a following dialog:



Select the columns that you are about to add on the process page of the process manager, click OK to finish your order or Cancel it.

How to Use Help Content

Right click to hide or show the toolbar, and you can customize the menu bar and toolbar at your will:



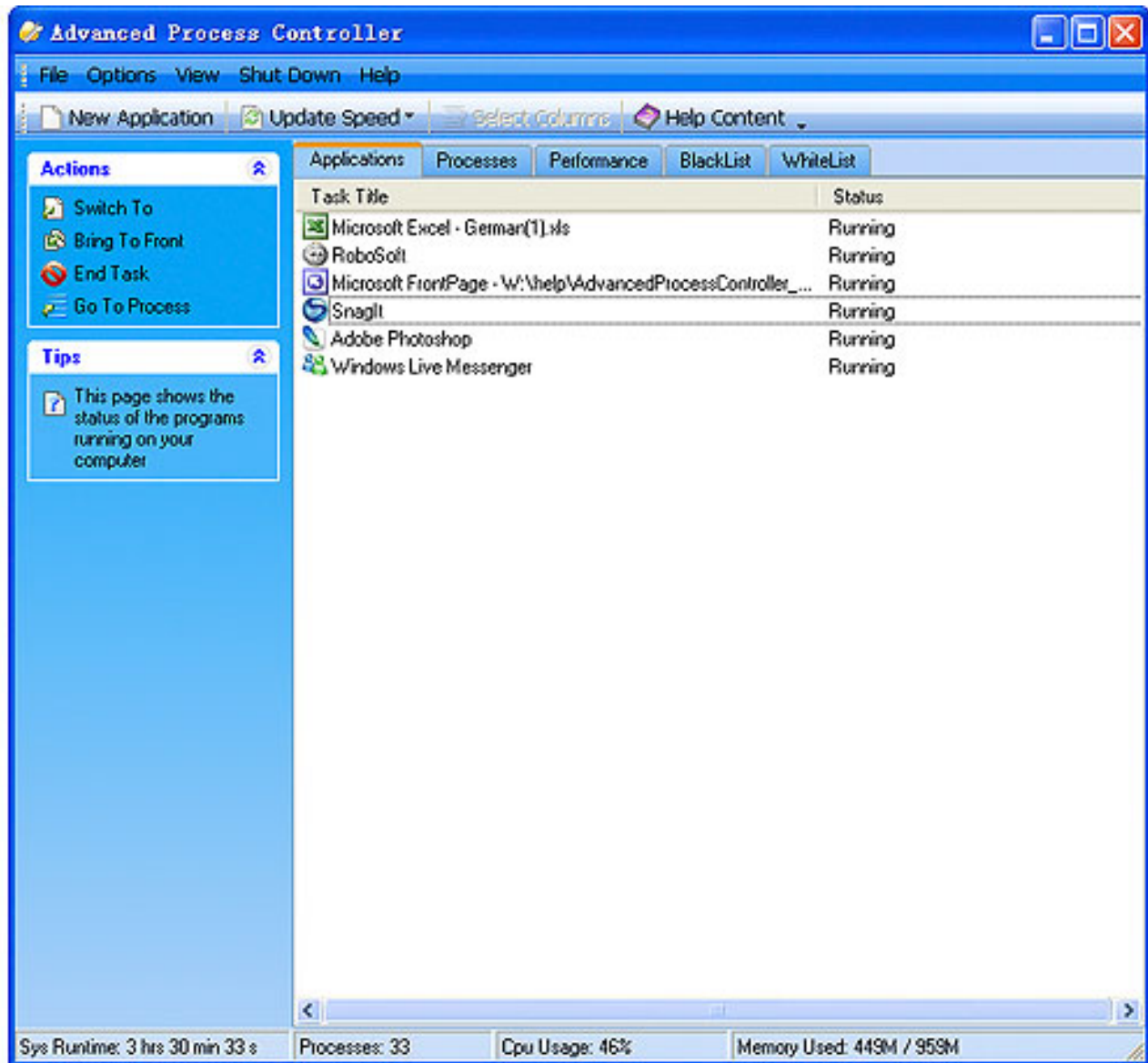
Other Using Process:

- ▶ [Using Process of Application](#)
- ▶ [Using Processes](#)
- ▶ [Using Process of Performance](#)
- ▶ [Using Process of Blacklist](#)
- ▶ [Using Process of Whitelist](#)

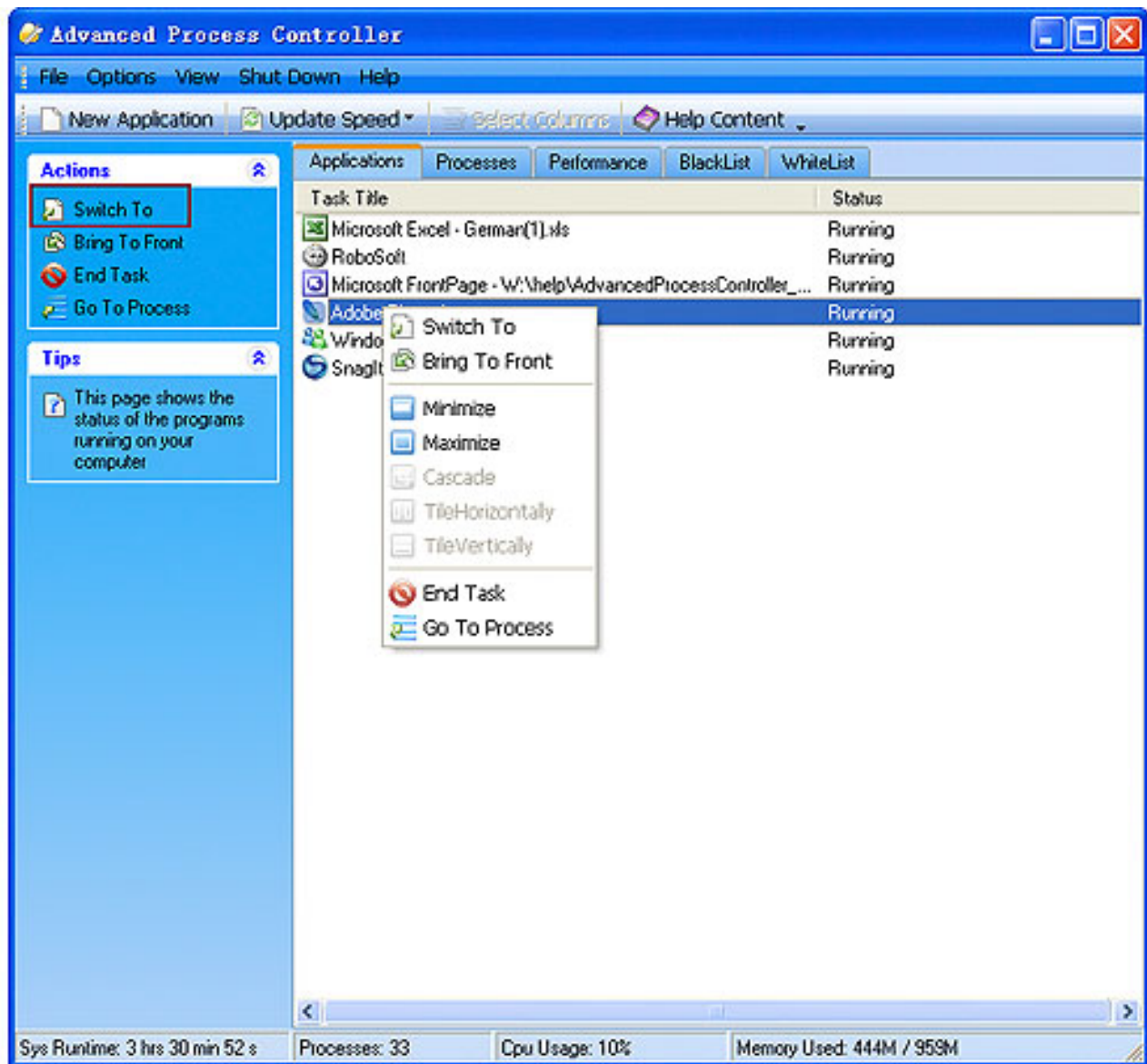
Buy Now

Using Process of Applications

► **Step 1:** Click "Applications" on Tab Page, Advanced Process Controller displays all active programs on the taskbar.



► **Step 2:** If you wish more tasks on a program, you can select it in the list and then click the task you need on the Task Panel.
Or select it in the list and then right click the task you need.



- ▶ To switch to another program
On the Applications tab, click the program you want to switch to, and then click Switch To
- ▶ To bring a program to front
On the Applications tab, click the program that you want to bring to front, and then click Bring To Front.
- ▶ To control the program's window
On the Applications tab, you are able to minimize or maximize the operation window of the selected program.
- ▶ To end a program with Advanced Process Controller
On the Applications tab, click the program that you want to end, and then click the "End Task" button.



WARNING: Any data entered or changes made in that program and not saved will be lost.

▶ To go to the process interface

On the Applications tab, you can switch to the process interface and view the process information of selected program by clicking Go To Process. .

Other Using Process:

▶ [Using Process of Toolbar](#)

▶ [Using Processes](#)

▶ [Using Process of Performance](#)

▶ [Using Process of Blacklist](#)

▶ [Using Process of Whitelist](#)



Using Processes

Advanced Process Controller allows you to view detailed processes information (with descriptions), stop and start new processes, set priorities and much more. You can easily find and remove unnecessary background processes.

You can easily see what's happening behind the desktop which processes are running on your computer.

On the Processes interface, left click a listed process, you are able to view the General information about the process, or to hide this displayed information by clicking Show Tips under the View menu. The following steps will assist to view the detailed information of listed process.

The screenshot displays the Advanced Process Controller application window. The interface includes a menu bar (File, Options, View, Shut Down, Help) and a toolbar with buttons for New Application, Update Speed, Select Columns, and Help Content. The main area is divided into several sections:

- Actions:** Contains buttons for Show Details, Properties, Open Folder, and Google Process.
- Process List:** Contains buttons for Add To BlackList, Add To WhiteList, and Add All To WhiteList.
- Tips:** A text box stating: "This Page displays a list of the currently active processes as well as their detailed information".
- Process Table:** A table with columns for Process Name, PID, Cpu Usage, and Mem Usage. The 'services.exe' process is selected and highlighted in blue.
- Process Details:** A pop-up window showing detailed information for 'services.exe', including its path, version, publisher, command line, and description.

Process Name	PID	Cpu Usage	Mem Usage
System Idle Process	0	76%	16K
System	4	8%	324K
smss.exe	636	0%	420K
csrss.exe	716	0%	13592K
winlogon.exe	740	0%	10152K
services.exe	784	0%	4912K
lsass.exe	800	0%	4080K
svchost.exe	5796K		
svchost.exe	3400K		
svchost.exe	8800K		
svchost.exe	1336	0%	5152K
avp.exe	8756K		
MDM.EXE	1540	0%	3408K
SMAgent.exe	1596	0%	2228K
alg.exe	2012	0%	4196K
avp.exe	1776	0%	2988K
msnmgmt.exe	1784	4%	20152K
ctfmon.exe	980	0%	5384K
usnsvc.exe	1992	0%	3096K
svchost.exe	3240	0%	4444K
TTPlayer.exe	3136	0%	10476K
AdvancedProcessControll..	232	0%	10476K
EXCEL.EXE	204	0%	5096K
SnagIt32.exe	616	0%	10476K
TSCHelp.exe	2420	0%	3332K
explorer.exe	3796	0%	19224K
RoboSoft.exe	3104	0%	2044K
msimn.exe	2140	0%	7636K

At the bottom of the window, a status bar shows: Sys Runtime: 2 hrs 43 min 48 s, Processes: 29, Cpu Usage: 25%, Memory Used: 380M / 959M.

▶ Step 1

Advanced Process Controller allows you to end process, right click the process you want to end, then point to the "end process".



WARNING: Terminating a process can cause undesired results including loss of data and system instability. The process will not be given the chance to save its state or data before it is terminated.

▶ Step 2

A. To debug the selected program by clicking the "Debug".



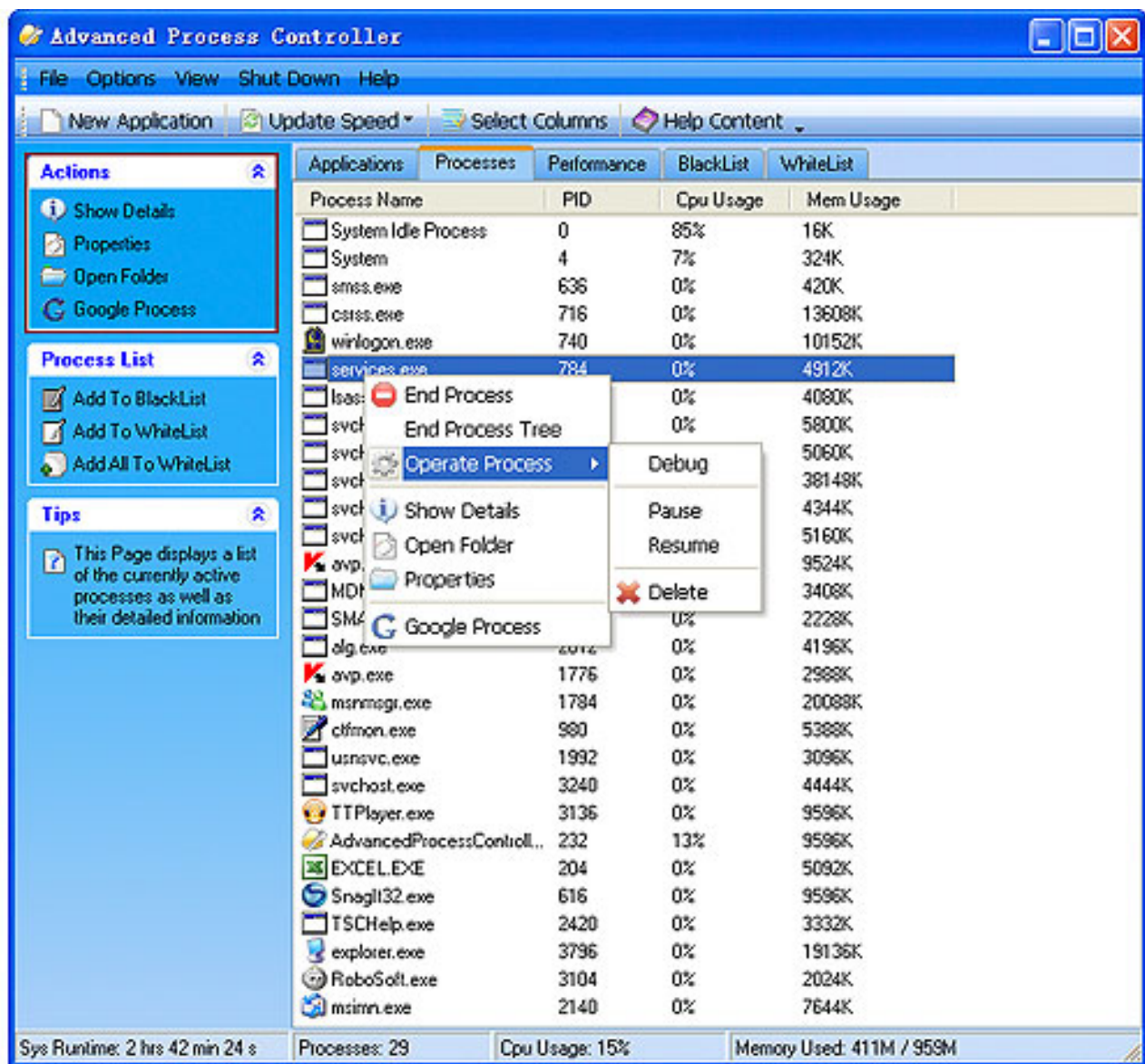
WARNING: This operation may result in loss of data.

B. Pause process suspends the execution of process until it is reactivated by the resume process command, click the "pause" or "resume".



WARNING: This operation will attempt to pause this process. If you pause some system process, it can cause system instability

C. Resume the paused process by clicking "Resume".



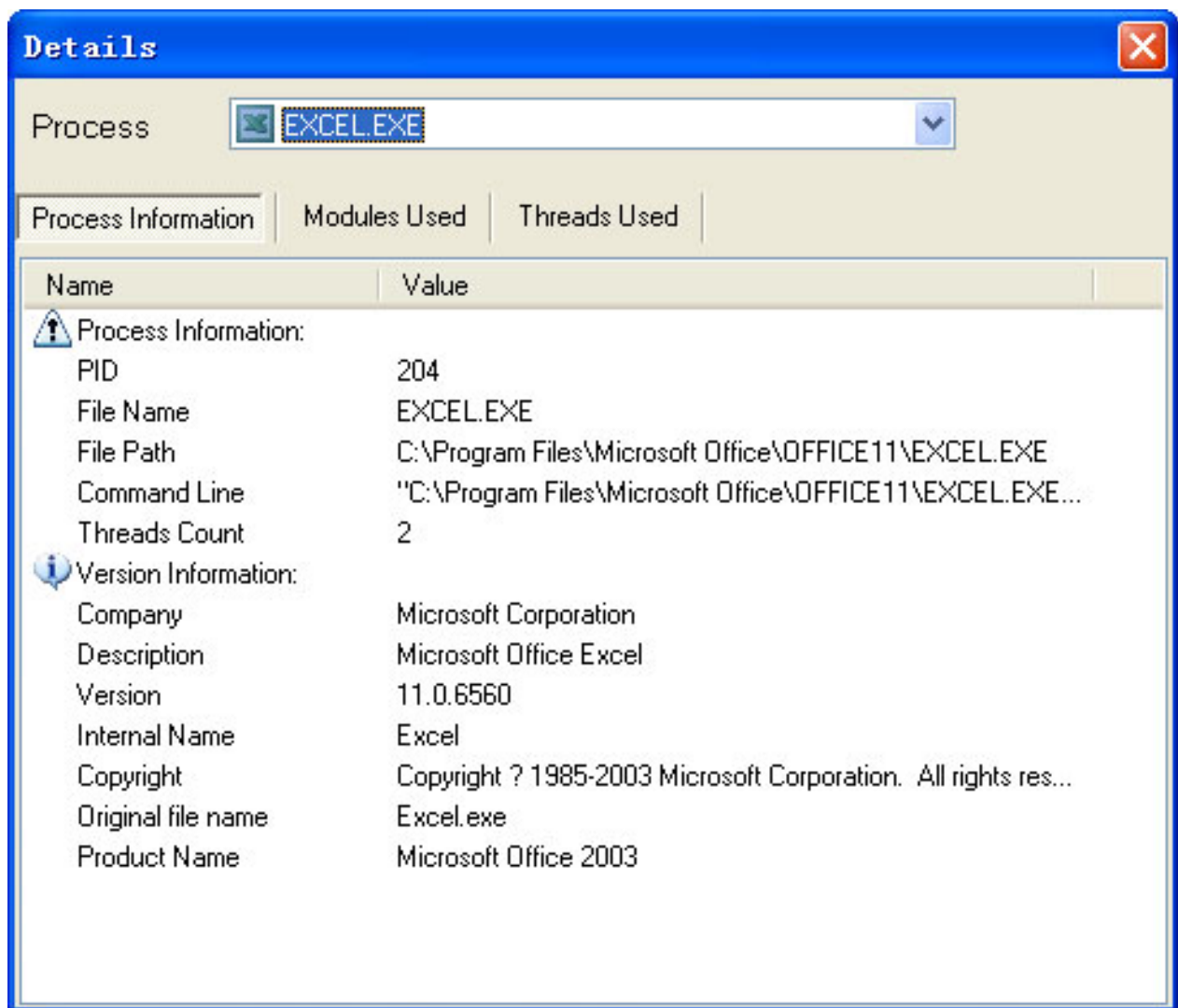
D. Delete the process by clicking the "Delete Process".



WARNING: Delete a process can cause undesired results including loss of data and system instability. It will delete the execute file of this process.

► **Step 3:**

Click " Show Details" to show information, used modules and used threads about the process. **(Same operation available in the Action area)**

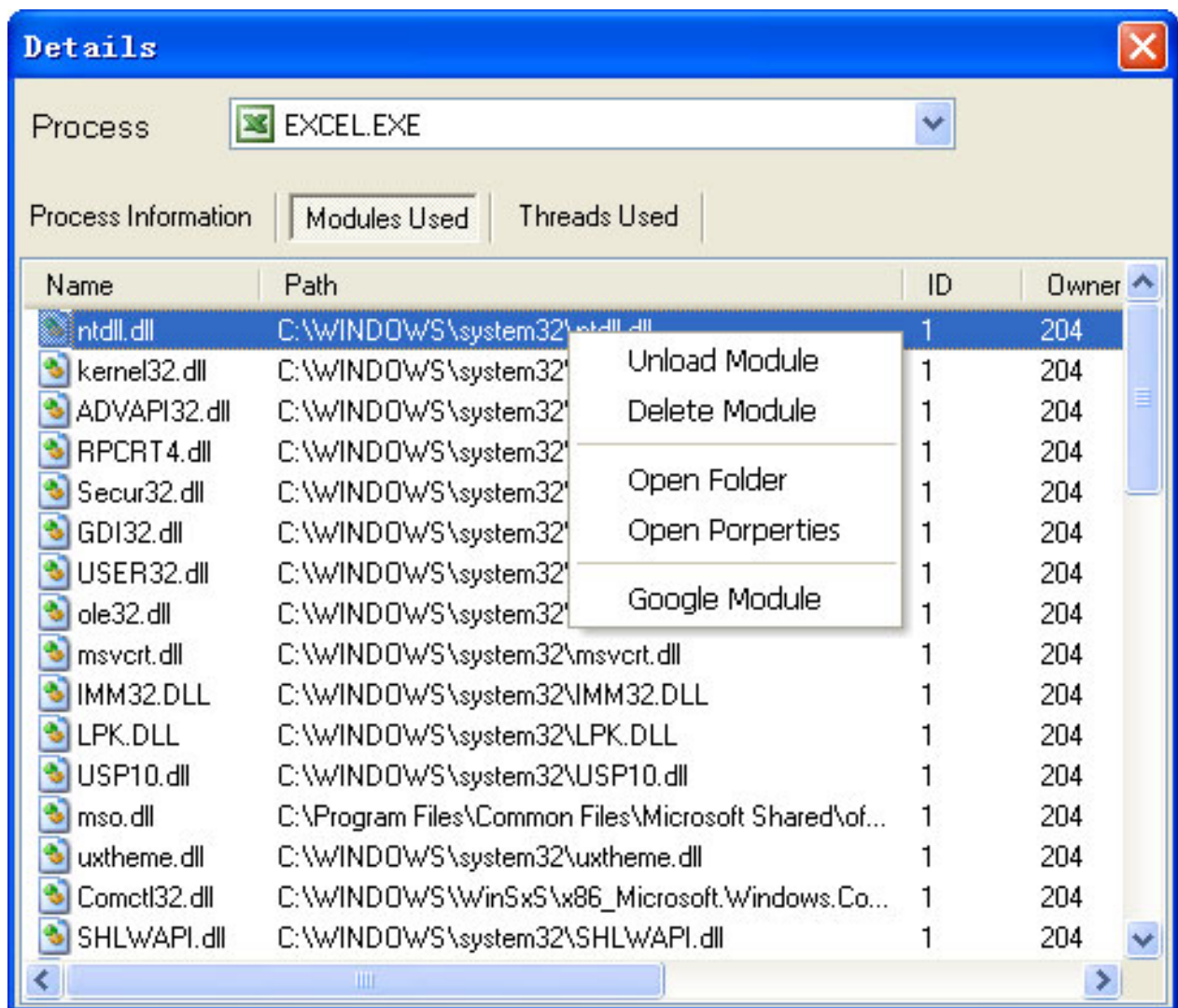


A: To unload module of a process.

On the Modules Used tab, click the module that you want to unload, and then right-click to Unload Module

B: To delete module of a process

On the Modules Used tab, click the module that you want to delete, and then right-click to Delete Module.



WARNING: The two operations may cause the process crash and if you unload or delete module of some system process, it can cause system instability.

C: To open properties of a process module.

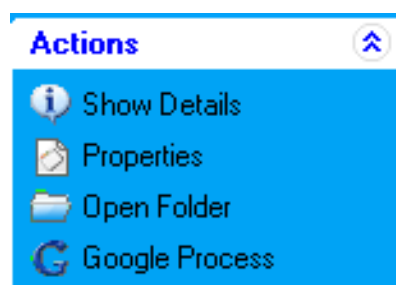
Click Open Properties, it will display the properties of the selected module.

D: To open folder for a process module.

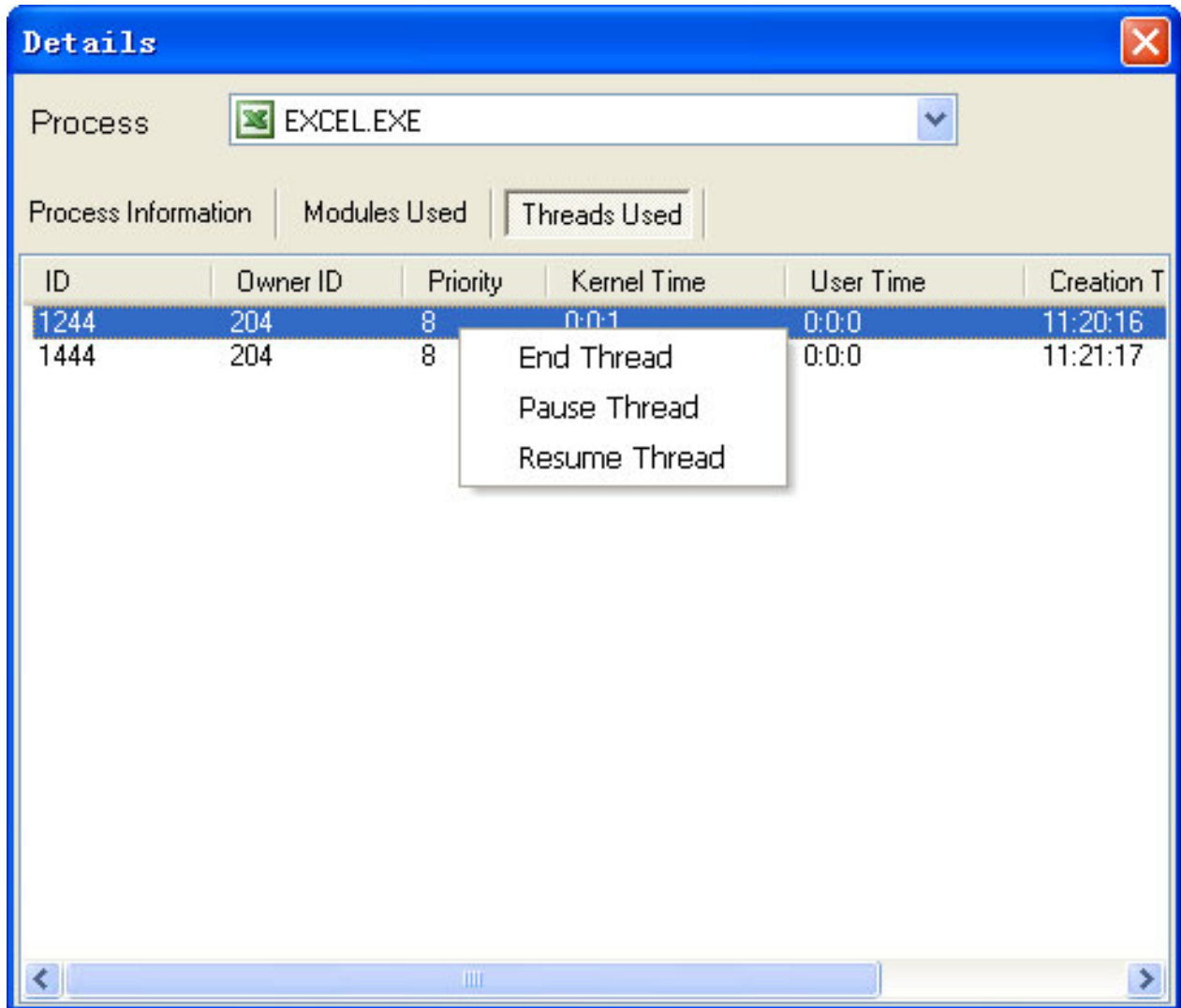
Click Open Folder to open the folder of selected module.

E: Free online resource for module information through Google, by clicking "Google Module".

Note: You are able to search the online resource, open properties and folder for the selected process in the Action part.



▶ **Step 4:** You can end or Pause thread suspends the execution of process until it is reactivated by the resume thread command, like this dialog:



WARNING: This operation will attempt to end the thread of this process, it may cause the process break down and instability.

Other Using Process:

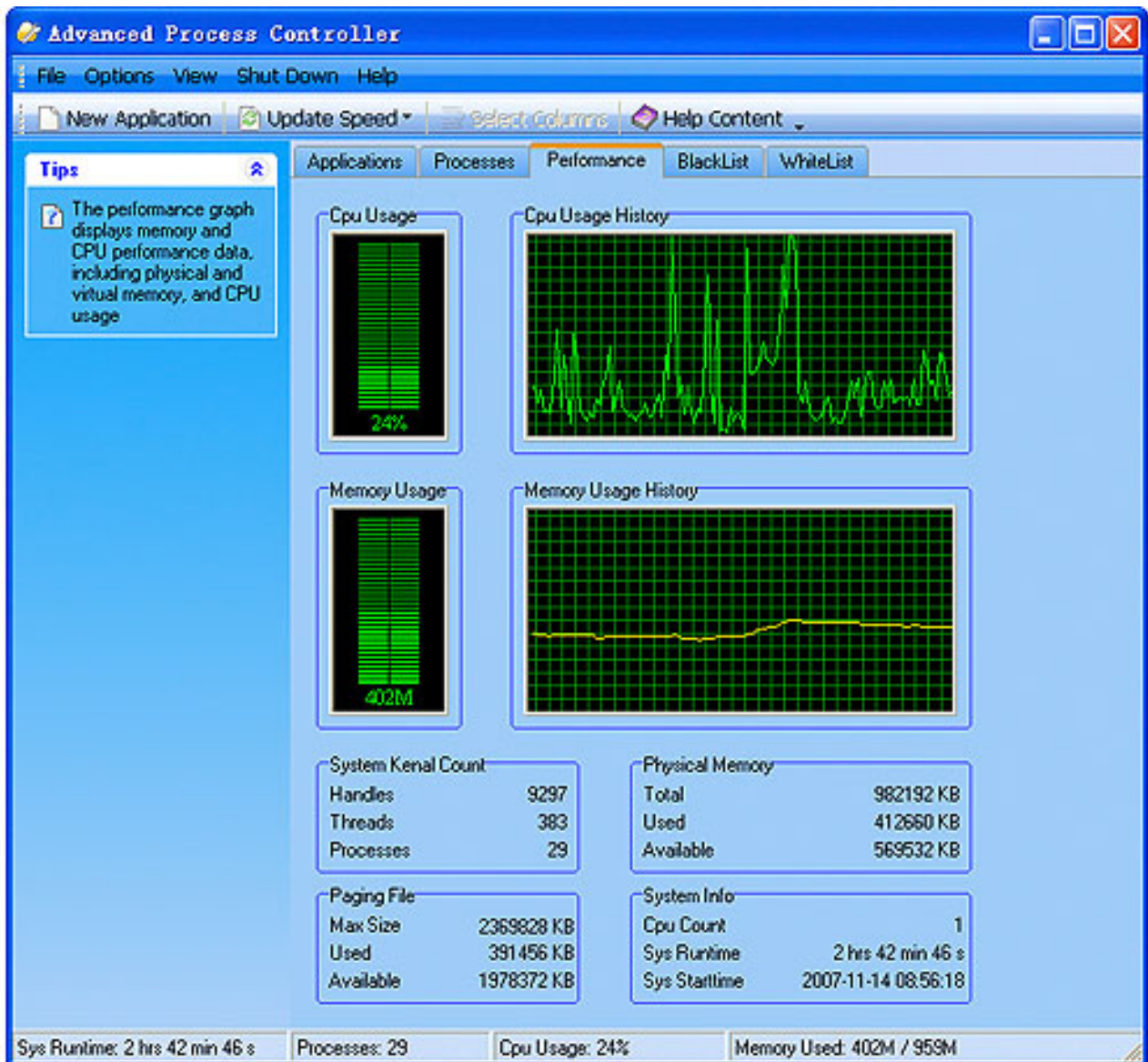
- ▶ [Using Process of Toolbar](#)
- ▶ [Using Process of Application](#)
- ▶ [Using Process of Performance](#)
- ▶ [Using Process of Blacklist](#)
- ▶ [Using Process of Whitelist](#)

Buy Now

Using Process of Performance

Memory and CPU performance data displays on this page, including physical and virtual memory, and CPU usage. The data refreshes at the same interval that the main display does. The Performance tab provides detailed information on the current status of your system. You can view the current processor usage in percent, and a graph of the processor usage for the last several seconds. A similar graph also shows memory usage for the last several seconds. You can also view the current usage of the paging file and the physical memory on kilobytes.

► Click "Performance" on the Tab Page, the performance graph displays memory and CPU performance data, including physical and virtual memory and CPU usage.



Other Using Process:

- ▶ [Using Process of Toolbar](#)
- ▶ [Using Process of Application](#)
- ▶ [Using Processes](#)
- ▶ [Using Process of Blacklist](#)
- ▶ [Using Process of Whitelist](#)



Using Process of BlackList

Advanced Process Controller offers feature of "Black List" (the list of processes that will be terminated in your system). Blacklist will terminate unwanted or badly-behaved processes immediately if the process name matches anyone on your list . If you want to terminate processes, add unwanted processes to Blacklist. Then Blacklist will terminate all listed processes immediately.

The following steps describe how to kill processes on Blacklist.

▶ **Step 1:** Click "Blacklist" on Tab page.

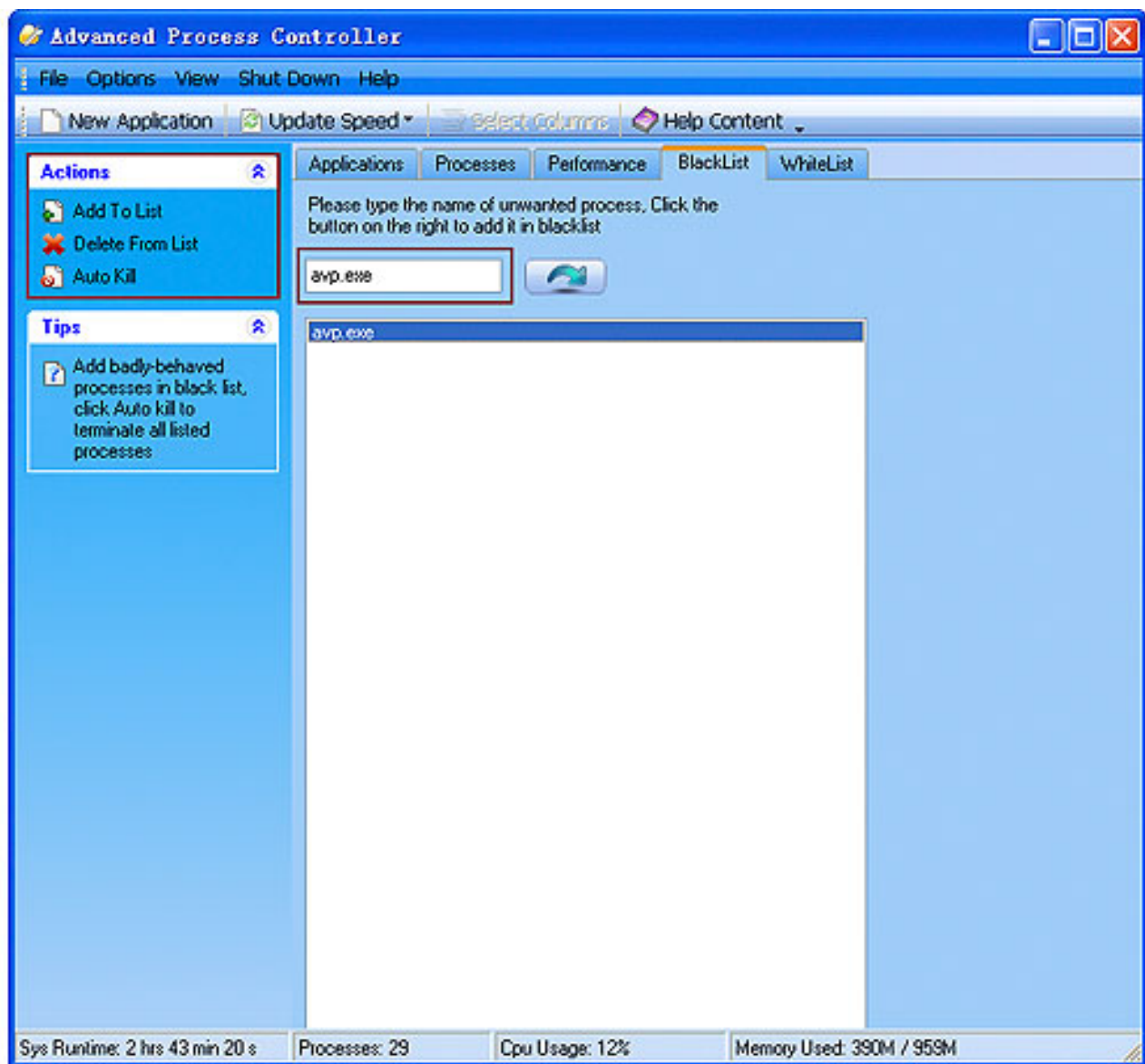
▶ **Step 2:** Type the name of the process that you want to add to the list, then click



or "Add To List" in the Actions part.

▶ **Step 3:** Click "Delete From List" to delete the selected program from the blacklist.

▶ **Step 4:** Click "Auto Kill" to terminate all processes listed in the Blacklist.



Warning: This operation will attempt to terminate listed processes. The process will not be given the chance to save its state or data before it is terminated. Be circumspect when kill listed processes.

Other Using Process:

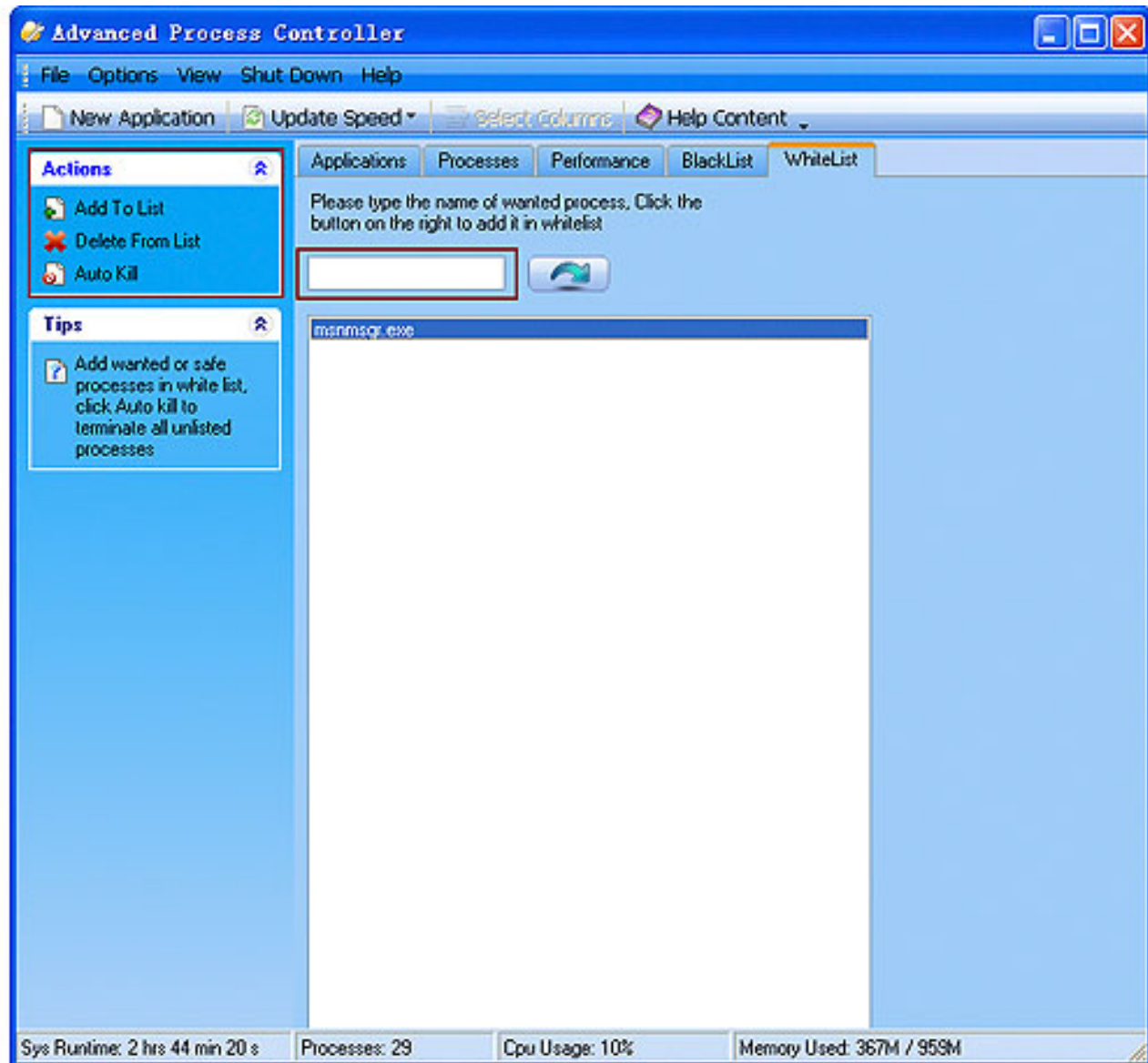
- ▶ [Using Process of Toolbar](#)
- ▶ [Using Process of Application](#)
- ▶ [Using Processes](#)
- ▶ [Using Process of Performance](#)
- ▶ [Using Process of Whitelist](#)


Buy Now

Using Process of WhiteList

White List which confirms that the item being analyzed is acceptable, it is a list of process names from which the process will be allowed to run.

You can add allowed or safe processes in whitelist , Advanced Process Controller will terminate all unlisted processes when you click Autokill.



▶ **step 1:** Type in the process name you want to add ,then click  or the "Add To List".

▶ **step 2:** If you want to remove a process from the list, click "Delete From List".

▶ **step 3:**Click "Auto Kill" Advanced Process Controller allows users to terminate all unlisted processes.



Warning: This operation will attempt to terminate all unlisted processes. The unlisted process will not be given the chance to save its state or data after you click "Auto kill"

Other Using Process:

▶ [Using Process of Toolbar](#)

▶ [Using Process of Application](#)


▶ [Using Processes](#)

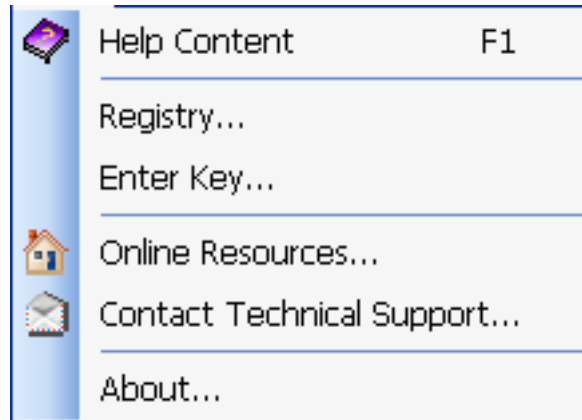
▶ [Using Process of Performance](#)

▶ [Using Process of Blacklist](#)



Question Icon

The button  shows other information about Advanced Process Controller. Clicking this icon, you will see the following window:



Help Content: Click this button or the Key "F1"(it works anywhere in the program), and a detailed help page about Advanced Process Controller will open. .

Registry :Guide to the registration window.

Enter Key: Enter the registration key to switch the trial version into full version.

Online Resources: Link to [WindowsSupporter Website](#) .

Contact Technical Support: Contact our Support Team.

About: Show the information of this software.

Buy Now

About WindowsSupporter

Be the Global Leader of Windows!

Being a shareware developer of Windows Operating System solutions, WindowsSupporter take the lead in this domain. We have professional experience in execute our faith - Think as A Customer. This gives us the idea to create reliable and simple-in-use software products for you.

WindowsSupporter R&D Center creates simple solutions to complicated problems. And sleek, clear interfaces in our accomplishment make everything you need from us being enjoyable.

Contact Us

For Customers

Email:

English: support@windowssupporter.com

French: support_fr@windowssupporter.com

German: support_de@windowssupporter.com

Tel:

+1 952 646-5022 (for calls from outside the U.S.)

+1,800,406 4966 (for calls from inside the U.S.)

Advanced Process Controller

Product ID: 300171544



We always do our best to answer your question!

For Partners

North America:

sales@windowssupporter.com

We benefit together with our partners in a win-win model - the WindowsSupporter Business Model, and we love to talk about our creations with you.



FAQs

➤ Replacing Task Manager

If you click File > Replace Task Manager, Advanced Process Controller integrates itself into your system so that you can access the module by pressing Ctrl+Alt+Del, or by right clicking on an empty part of the taskbar and selecting Task Manager. If you want to use the Windows Task Manager again, simply select the same menu item to remove the check mark in front of it.

Note: This function is only available for Windows 2000 and Windows XP.

➤ Menu bar functions

The menu bar at the top of the Advanced Process Controller window provides you with additional functions.

Click File > New Application (Run...) to open the Windows Run dialog, which you can use to start a new application or open a file.

Click Option > Select Columns ,On this page you can specify which columns (information) you want to see in the list view of Process Info.

Click View > Always On Top, the process you choose always display on the most preceding.

Click Shut Down > Turn off, you can close your computer or restart it.

Click Help > Help content , show more help information in using of Advanced Process Controller.

➤ To end a process

Click the process that you want to end, and then click End Process.



Be careful when ending a process. If you end an application, you will lose unsaved data. If you end a system service, some part of the system might not function properly.

➤ Process Properties

The "Process Properties" dialog displays additional information about a process.

The following info is shown:

A: Complete version resource

B: Path of the process executable

C: Current working directory

D: Environment variables

E: Resource types

F: Common file information

How to buy Advanced Process Controller

As soon as you make your order, our resellers will verify it. Your order will most likely be processed within less than 1 hour, but in some VERY rare cases it may take resellers more than 24 hours to process your payment.

The registration key will be automatically generated at our server and e-mailed to you immediately after we receive payment confirmation from our e-commerce reseller.

Please do not worry if you haven't received the registration information right away. Delays usually occur due to the high security settings of spam filters used by our clients. Our message may be rejected as a spam message by the mail service you use.

If you haven't got the registration message in several hours, feel free to contact our [Support Team](#) via email.

If you have questions concerning our software, please send e-mail to: support@windowssupporter.com. **We always do our best to help you!**



Buy Now

Why Advanced Process Controller?

Save Time

- a. It is outstanding in **high-speed**;
- b. The **easy-in-use interface** reduces your time in learning;

Save Money

- a. It is **one-way ticket** you have to buy in fixing all your registry problems;
- b. Guarantee **30-days-money-back** if you are unsatisfied with it!

All in one tool

Do more with dealing with badly-behaved programs, show more details about the process and kill programs manually are all supported by this powerful tool.

Easy-in-use

It is easy to use and fast in speed, With step-by-step manual, Whether you

are an experienced user or a beginner, the software will make the task of optimizing your system a breeze!

What will you have after purchase?

Full version of Advanced Process Controller

There would no limit in its functions, and you could have fun in unlimited system optimizing.

Lifetime license

When you purchase Advanced Process Controller, you get free online upgrades on the main version with Lifetime Upgrade Policy.

Customer care

We are pleased to offer our care to meet your needs. We promise that any customer question will be satisfied within 1 business day!

Coupons for WindowsSupporter products in Discount Center

We prepared a series of benefits for our customers.

Is my order secure?

We promise the most secure purchase as we did for years.

[ShareIt](#) and [RegNow](#), all these WindowsSupporter partners passed strict certification. We truly believe in 'Only by benefiting our customer can we benefit ourselves'. So your purchase security in WindowsSupporter is one of the top affairs we care about! WindowsSupporter has been involved in E-commerce for years. And through these years, we built up a secure online shopping system. You can enjoy the high-speed and convenience we offered.