

Document No.: Internet/System History Cleaning Studio Help Document

# Internet/System History Cleaning Studio

WindowsSupporter Corp.

<http://www.windowssupporter.com>

### Pages Order

<b>Getting Started</b> .....	Pages 3-11
<b>Using Internet/System History Cleaning Studio</b> .....	Pages 12-16
<b>Company Information</b> .....	Pages 17
<b>How to Buy</b> .....	Pages 18-19
<b>Terms</b> .....	Pages 20-21

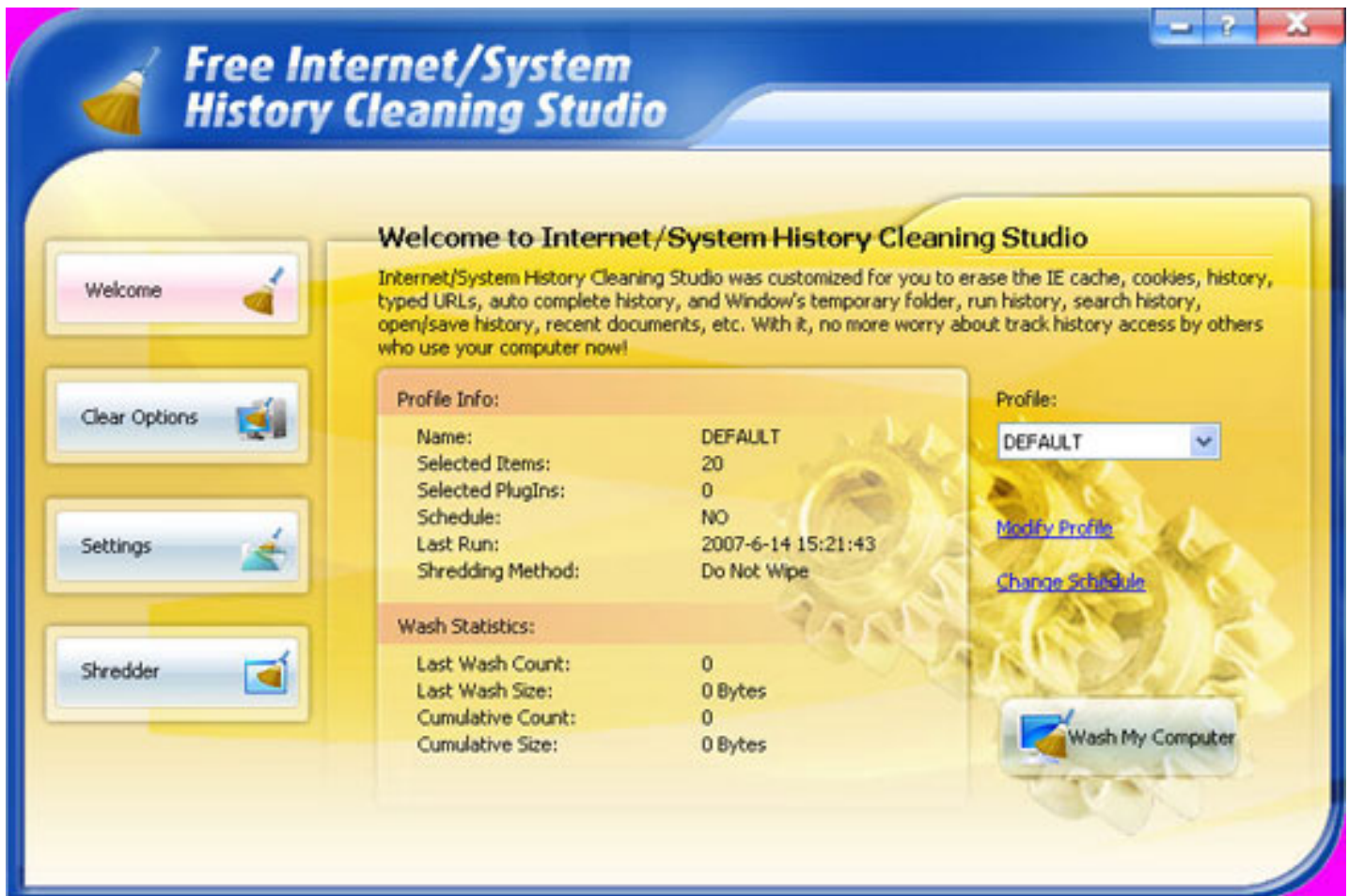
# Internet/System History Cleaning Studio

## Introduction

### Introduction

Your computer stores more information than you think. All over your hard drive is information about the sites you've visited, files you've opened, and people you've e-mailed. Automatic Windows and Internet Washer cleans any evidence of your Internet and Windows habits. You can have it run on schedule to automatically clean your system in stealth mode, as well as on Windows start-up and shutdown.

Internet/System History Cleaning Studio was customized for you to erase the IE cache, cookies, history, typed URLs, auto complete history, and Window's temporary folder, run history, search history, open/save history, recent documents, etc. With it, no more worry about track history access by others who use your computer now!



### Features Overview

Protect your Privacy, keep your Surfing private

Completely cleans all traces of online Internet activities on your computer including cache, cookies, index.dat and history

Permanently deletes recycle bin contents, temporary files, document history, plus many more PC tracks

Erase MS Office, Outlook Express

Bleaches free space and deleted files using Department of Defense standard (DoD 5220.22-M) making them unrecoverable using regular methods

Plug-ins to clean the history of 100+ third-party programs, including chat, image viewing, P2P applications and more

Supports Internet Explorer, Netscape, Mozilla Firefox America Online and Instant Messages

Free space on your Hard Drive

Speed up your computer

And much more!

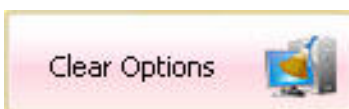
# Internet/System History Cleaning Studio


## Quick Start

### Quick Start

The following instructions should get you delete Internet and computer activities in no time!

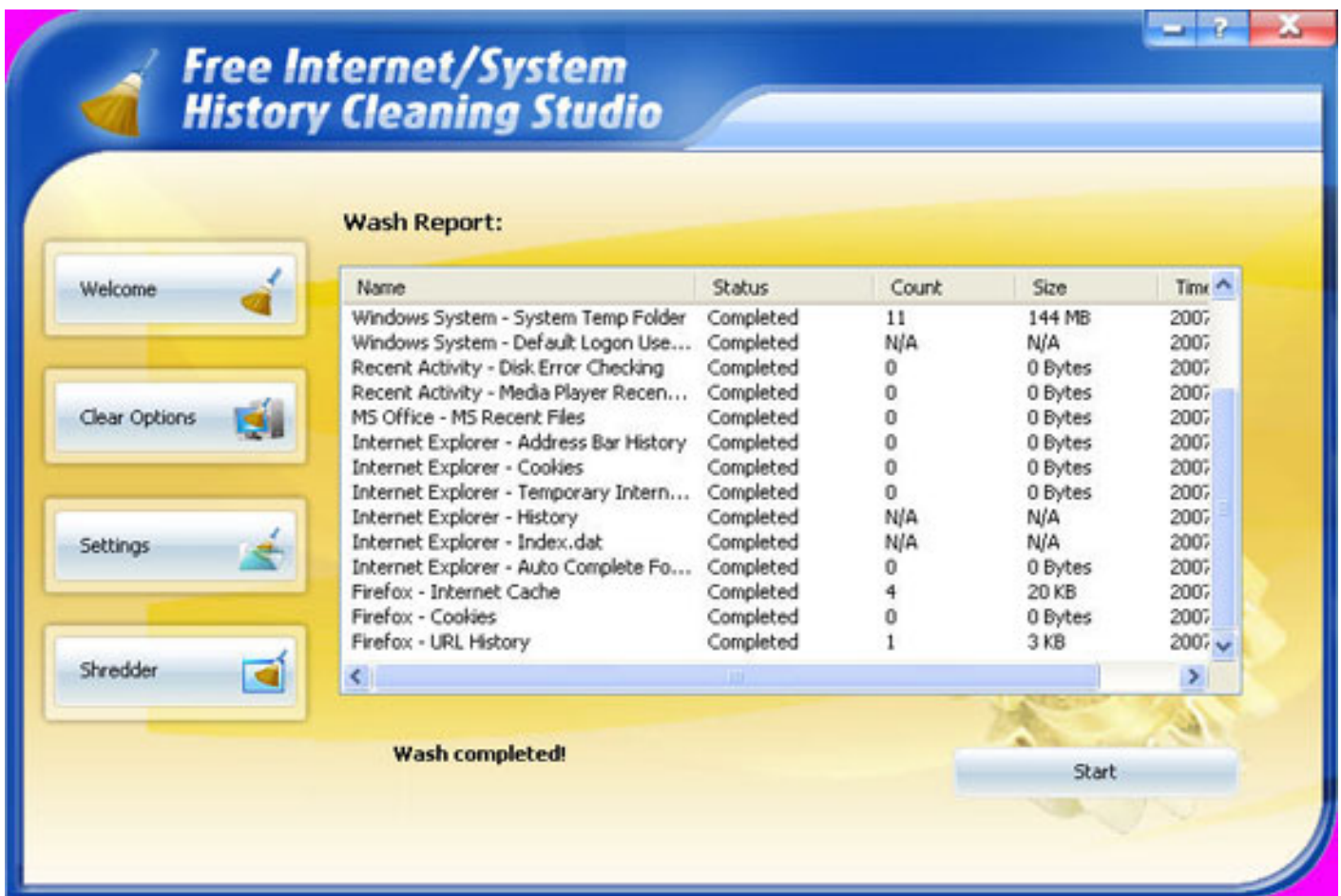
1. Start the program. the System Overview screen is the default screen.



2. Click on  in the System Overview Screen to add Profiles and set Profile Automation.

3. The Setting Screen allows you to select which items within the Internet/System History Cleaning Studio to delete. To configure settings, you should tick the check boxes. By default, Internet/System History Cleaning Studio performs complete scans.


Internet/System History Cleaning Studio will start scanning and for a short while (depending on how big your registry is), then you will see the following Progress Screen:



This window indicates it already finished the washing task.

### How to Add a Customer wash Item

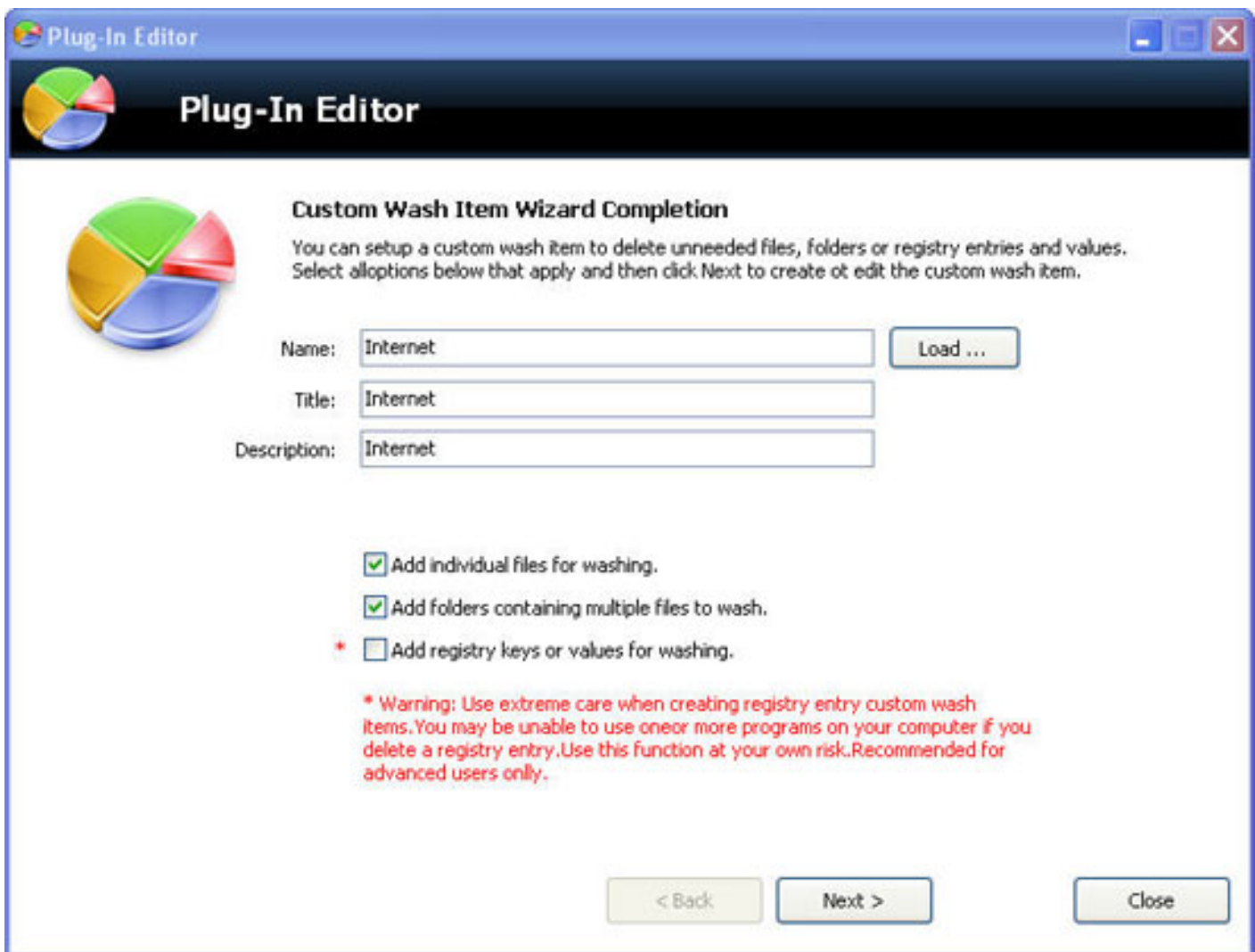
You are able to custom wash items by click



The following steps describe how to add a customer wash item

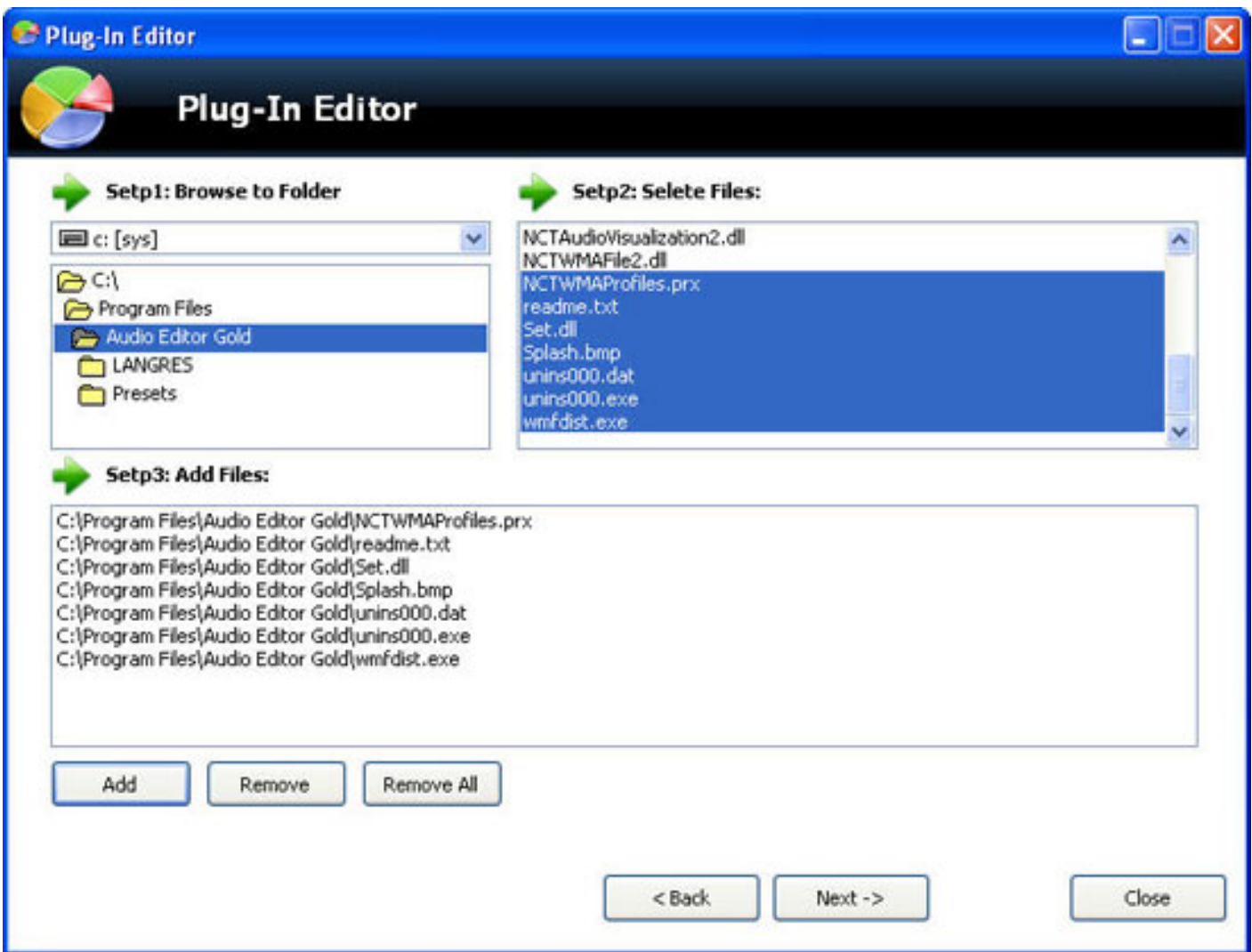
Step1: Click the the button "Add A Customer Wash Item"

Step2: Create a new Plug-in by typing Name, Title and Description, or open a Plug-in by clicking "load..." button, then click "Next Button".

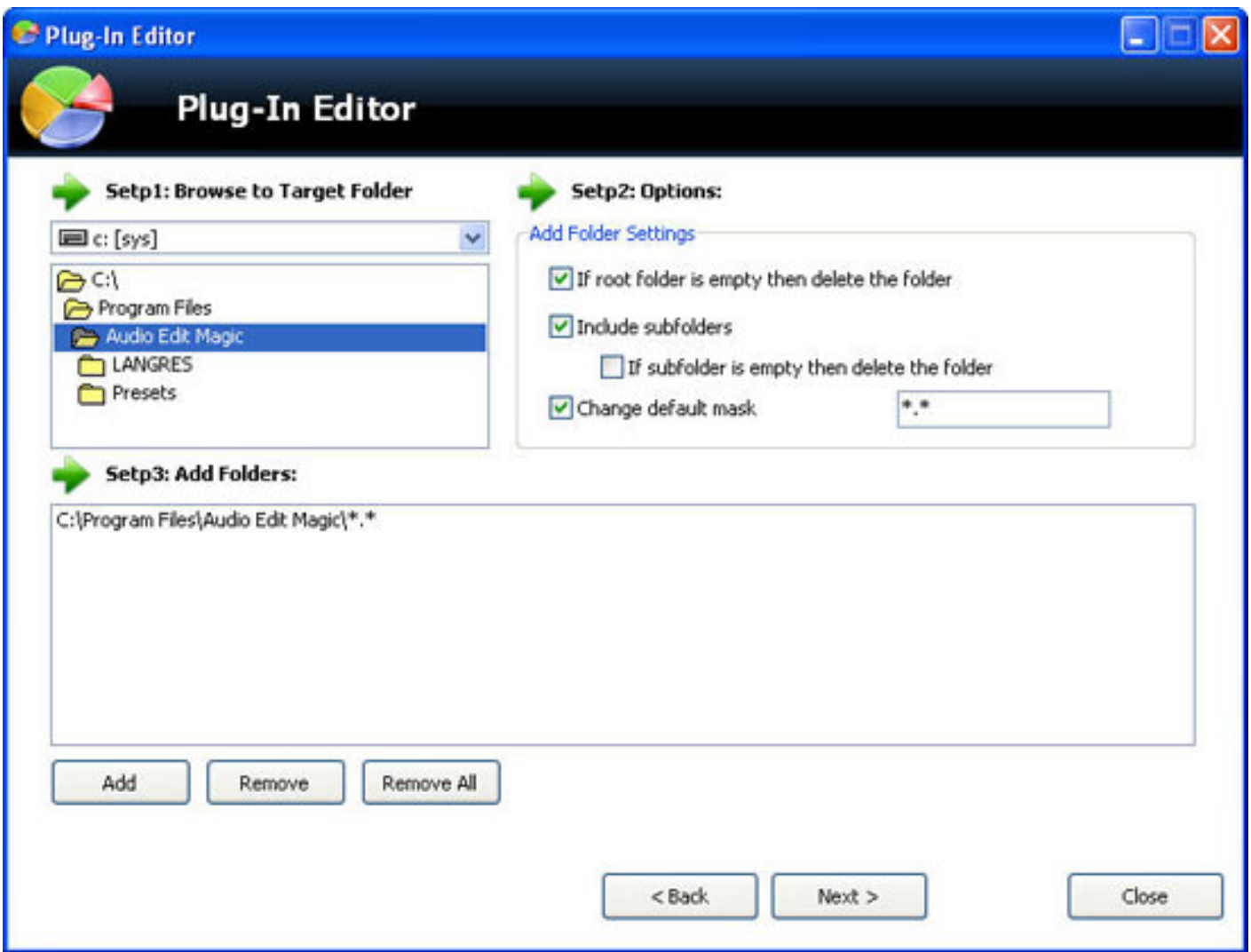


The screenshot shows a window titled "Plug-In Editor" with a sub-header "Plug-In Editor". The main content area is titled "Custom Wash Item Wizard Completion". Below the title, there is a pie chart icon and a text block: "You can setup a custom wash item to delete unneeded files, folders or registry entries and values. Select alloptions below that apply and then click Next to create ot edit the custom wash item." Below this, there are three text input fields: "Name: Internet", "Title: Internet", and "Description: Internet". To the right of the "Name" field is a "Load ..." button. Below the input fields, there are three checkboxes: "Add individual files for washing." (checked), "Add folders containing multiple files to wash." (checked), and "Add registry keys or values for washing." (unchecked). Below the checkboxes, there is a red warning message: "\* Warning: Use extreme care when creating registry entry custom wash items.You may be unable to use oneor more programs on your computer if you delete a registry entry.Use this function at your own risk.Recommended for advanced users only." At the bottom of the window, there are three buttons: "< Back", "Next >", and "Close".

Step3: Delete files. Double click the folder to browse the proper file, and add them in the show window.



Step4: Delete Folder. Double click the folder to browse the proper folder, and add it in the show window.



Step5: Press "Create" button the save your configuration and complete the process.



# Plug-In Editor



## Finished!

You have now completed the configuration of your custom wash item. Click the "Create" button to save your configuration and complete the process.

If you would like to change the description of your custom wash item, please do so at this before you click Create button.

### Custom Wash Item Contains:

7Files to Wash

0Folders to Wash

Registry Keys and Values to Wash

< Back

Create

Close

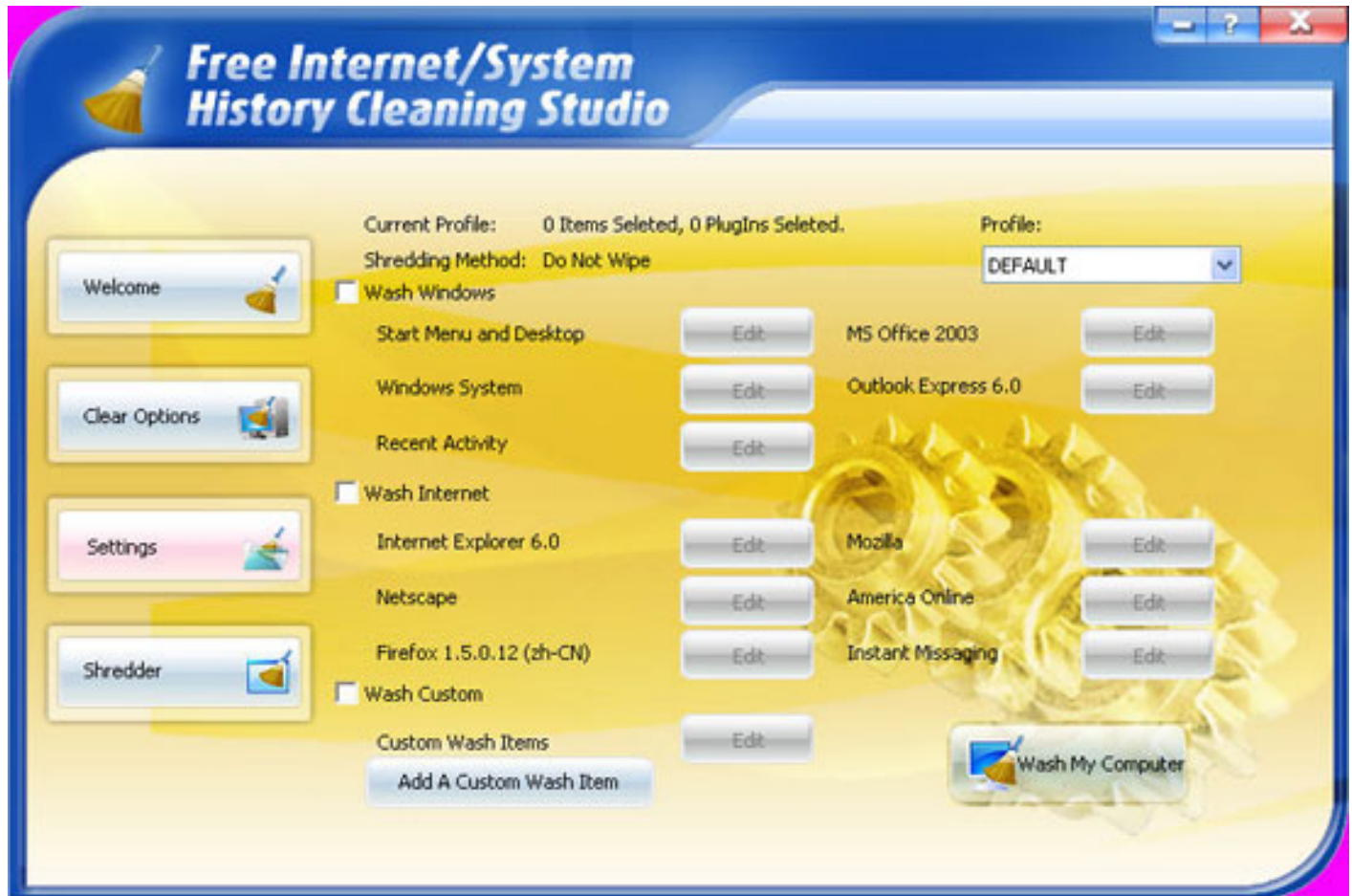
# Internet/System History Cleaning Studio

## Configuring Internet/System History Cleaning Studio

### Configuring Internet/System History Cleaning Studio

Internet/System History Cleaning Studio may be configured to reflect your personal preferences.

To configure Internet/System History Cleaning Studio, click on the Settings Tab in the Navigation Panel.



To change the settings simply check box next to the particular preference.

Those options allow you to eliminates the traces in Windows and Internet. Click the specific check box to select options which you'd like to wash.

Or you are able to custom wash items by click

Add A Custom Wash Item



Once the combination of preferences are selected, click on

# Internet/System History Cleaning Studio

The user interface (Overview)

## The user interface (Overview)



**Overview:** When Internet/System History Cleaning Studio starts, the System Overview screen is the default screen.

**Navigation Panel:** Including tabs of Welcome, Clear Options, Settings and Shredder. To navigate from one screen to the other, you need to click on those tabs.

**Main Area:** contains the System Overview or a report showing summary details of:

- Profile Name
- Selected Items
- Selected PlugIns
- Shredding Method
- Wash Statistics

**Profile Drop List:** Select Profiles in the drop list.

**Modify Profile:** Guide to the Clear Option Window.

**Change Schedule:** Guide to the Shredder Window.

### Clear Option

In the Clear Option Screen, you are able to add Profiles and set Profile Automation:




Click the button "New", "Rename" and "Delete" to correspond to its functions of Profile. This Profile will be displayed in the Profile drop list on the Welcome Window.

The Profile Automation check box allow you run Internet/System History Cleaning Studio at specific time or on a specific event.

### Shredder



Click on  to start configured to reflect your personal preferences. To change the settings simply check box next to the particular preference.




### Settings:

Load Window Washer at windows startup: This launches Internet/System History Cleaning Studio as a service upon boot-up.

Minimize Windows Washer after a wash: You may want to launch Internet/System History Cleaning Studio to run in the background. Tick the checkbox next to the "Start Minimized on Tray" entry.

Password-Protect Window Washer settings: Tick this check box to set a password, so other person could not use this application.

### Question Icon

The Question Icon  shows other information about Internet/System History Cleaning Studio. Clicking this icon, you will see the following window:



**Help Content:** Guide to the help file, or clicking the Key "F1" to see the help file directly.

**Quick Start:** Guide to the "The user interface (Overview)" page in the help file.

**Languages:** Choosing English.

**Register:** Open to the registration window.

**Enter Serial Number:** Enter the registration key to switch the trial version into full version.

**Online Resources:** Link to Windows Supporter Website.

**Contact Technical Support:** Contact our Support Team.

**About:** Show the information of this software.

### About Windows Supporter

#### Be the top Guard of Windows!

Being a shareware developer of Windows Operating System solutions, Windows Supporter take the lead in this domain. We have professional experience in execute our faith - Think as A Customer. This gives us the idea to create reliable and simple-in-use software products for you.

Windows Supporter R&D Center creates simple solutions to complicated problems. And sleek, clear interfaces in our accomplishment make everything you need from us being enjoyable.

#### Contact Us

##### For Customers

Email:

English: [support@windowssupporter.com](mailto:support@windowssupporter.com)

French: [support\\_fr@windowssupporter.com](mailto:support_fr@windowssupporter.com)

German: [support\\_de@windowssupporter.com](mailto:support_de@windowssupporter.com)

Tel:

+1 952 646-5022 (for calls from outside the U.S.)

+1,800,406 4966 (for calls from inside the U.S.)

##### Internet/System History Cleaning Studio

Product ID: 300159569



We always do our best to answer your question!

##### For Partners

North America:

[sales@windowssupporter.com](mailto:sales@windowssupporter.com)

We benefit together with our partners in a win-win model - the Windows Supporter Business Model, and we love to talk about our creations with you.



<http://www.windowssupporter.com>

### How to buy Internet/System History Cleaning Studio

As soon as you make your order, our resellers will verify it. Your order will most likely be processed within less than 1 hour, but in some VERY rare cases it may take resellers more than 24 hours to process your payment.

The registration key will be automatically generated at our server and e-mailed to you immediately after we receive payment confirmation from our e-commerce reseller.

Please do not worry if you haven't received the registration information right away. Usually it happens due to too secure settings of spam filters used by our clients. And it may happen so that our message is rejected as a spam message by the mail service you use.

In case if you haven't got the registration message in several hours, feel free to contact our [Support Team](#) via email.

If you have any questions concerning our software, mail to: [support@windowssupporter.com](mailto:support@windowssupporter.com). **We always do our best to help you!**



**Buy Now**

### Why Internet/System History Cleaning Studio?

#### Save Time

- It is outstanding in **high-speed**;
- The **easy-in-use interface** reduces your time in learning;
- According to surveys, it saves **20%** time in scanning;

#### Save Money

- It is **one-way ticket** you have to buy in eliminating the traces left behind on your computer;
- Guarantee **30-days-money-back** if you are unsatisfied with it!

#### All in one tool

It uses an advanced eraser to ensure all traces of your Internet and computer activities are permanently deleted and unrecoverable on your PC.

#### Easy-in-use

It is easy to use and fast in speed, With step-by-step manual, Whether you are an experienced user or a beginner, the software will make the task of optimizing your system a breeze!

## **What will you have after purchase?**

### **Full version of Internet/System History Cleaning Studio**

There would no limit in its functions, and you could have fun in unlimited system optimizing.

### **Lifetime license**

When you purchase Internet/System History Cleaning Studio, you get free online upgrades on the main version with Lifetime Upgrade Policy.

### **Customer care**

We are pleased to offer our care to meet your needs. We promise our customers, any customer questions will be satisfied within 1 business day!

### **Coupons for Windows Supporter products in Discount Center**

We prepared a series of benefits to our customers.

## **Is my order secure?**

We promise the most secure purchase as we did for years.

[ShareIt](#) and [RegNow](#), all these Windows Supporter partners passed strict certification. We truly believe in 'Only benefit our customer can benefit ourselves'. So your purchase security in Windows Supporter is one of the top affairs we care about! Windows Supporter has been involved in E-commerce for years. And through these years, we built up a secure online shopping system. You can enjoy the high-speed and convenience we specially offered for you.

### **Glossary of Terms**

#### **ActiveX**

An ActiveX control is essentially a simple OLE object that supports a variety of interfaces. ActiveX Controls have become the primary architecture for developing programmable software components for use in a variety of different containers, ranging from software development tools to end-user productivity tools. ActiveX controls register themselves in the Windows Registry.

#### **Application**

Applications are programs that are designed for end users such as word processors, spreadsheets, Customer Relationship Management and database software.

#### **Backup**

The procedure that allows you to store your data on a separate storage medium so that you can reproduce the data with 100% accuracy if and when data loss takes place.

#### **COM**

Microsoft defines COM or Component Object Model as "a platform-independent, distributed, object-oriented system for creating binary software components that can interact. COM is the foundation technology for Microsoft's OLE (compound documents), ActiveX® (Internet-enabled components), as well as others".

#### **Custom Controls**

A custom control is subsequently a control that is non-standard to Windows or proprietary to the application that is being installed. An example, in a car racing game, a custom control would be the speedometer. It is not a native Windows control but is required by the application (car racing game).

#### **File Associations**

A file association allows you to control certain aspects of how the Shell's treats different file types.

#### **File Extensions**

In such operating systems as Windows, one or several letters (generally three) at the end of a filename. Filename extensions usually follow a period (dot) and indicate the type of information stored in the file. Common file extensions include pdf, .exe, .gif, .jpg, .tif, .mp3, .avi, .doc, .xls, and .zip.

#### **File System**

A system for organizing directories and files, generally in terms of how it is implemented in the disk operating system.

#### **Objects**

An object is a software bundle of variable items of data (state) and related behaviors implemented through methods. A method is function (subroutine) associated with an object. For example, an event is a common object used in window systems to represent the action of a user pressing a mouse button or a key on the keyboard.

## **Processes**

While the term "program" refers to an executable code (the exe file for MS Word, for example), a process is a program that is being executed. When you start a program in Windows, the executable will be loaded into RAM. Windows will then add the new process to its internal process list and make sure the process receives some CPU time as well as memory and other resources.

## **Restore**

The process of reinstating a set of data to its original state before the data loss or related incident has occurred.

## **Shell**

The Windows user interface gives you access to a wide variety of objects necessary for running applications and managing the operating system. The most numerous and familiar of these objects are the folders and files that reside your hard drive. There are also a number of virtual objects that allow the user to do tasks, such as send files to remote printers or access the Recycle Bin. The Shell organizes these objects into a hierarchical structure and provides users and applications with a consistent and efficient way to access and manage various objects. Users interact with the hierarchy (or namespace) through the Shell's graphical UI or through an application.

## **Shell Namespace**

The Shell namespace organizes the file system and all objects managed by the Shell into a single tree-structured hierarchy. Think of it as a larger and more inclusive version of the file system.

## **Shortcuts**

Special types of files that contain preset links to various single files, folders and devices. Windows has a series of shortcuts placed on the computer desktop to allow access to files and devices at one click of a button.

## **User Interface**

The menu and general instruments available for the user to communicate with the program. In Internet/System History Cleaning Studio the user interface is designed to be highly intuitive and exceptionally simple to use.

## **Virtual Devices**

Virtual devices are also referred to as a virtual peripheral - a virtual device mimics a physical hardware device, essentially, "tricking" your system into believing that a device exists when actually it does not. For example, fax software can act as a virtual printer. When want to send a document to your fax modem, you would print it "normally" to the fax/modem (virtual printer) device, which then sends information to another fax / modem or fax machine instead of your printer actually printing the file.